

Shepherd of the Prairie Organization

The Shepherd of the Prairie **Congregational Council** is the official lay governing body of the congregation. It is responsible for assisting the pastors in the spiritual oversight of the congregation, seeing that all rules and regulations of the congregation are rightly executed, and transacting all necessary business of the congregation.

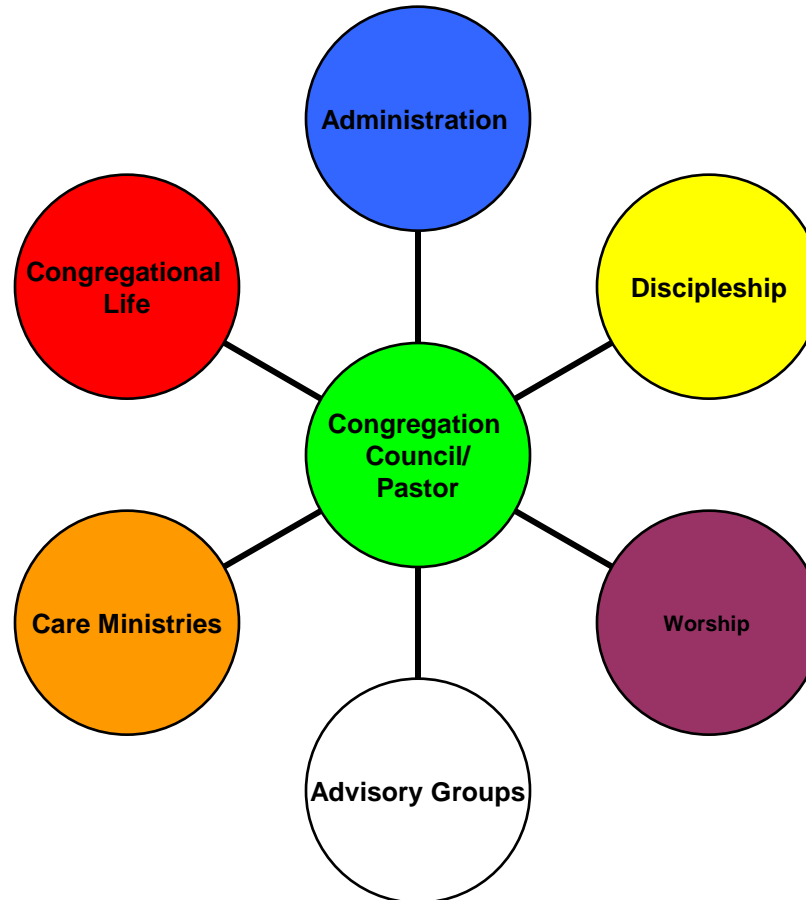
The Congregation Council of SOTP consists of the pastor, and eight members elected for 2-year terms by the congregation at the annual meeting. Council members elect their officers for 1-year terms. The current officers are

President:
Jules Pelka

Vice President:
Mike Kasal

Secretary:
Kristi Cordle

Treasurer:
Sue Boyle



The remaining council members are called communicators. Communicators are responsible for different areas of ministry at SOTP. The current communicators and their assigned areas are

Administration:
Pastor Mark Boster

Congregational Life:
Ferdie Kimminau

Discipleship:
Devin Burg

Care Ministries:
Rebecca Fulcer

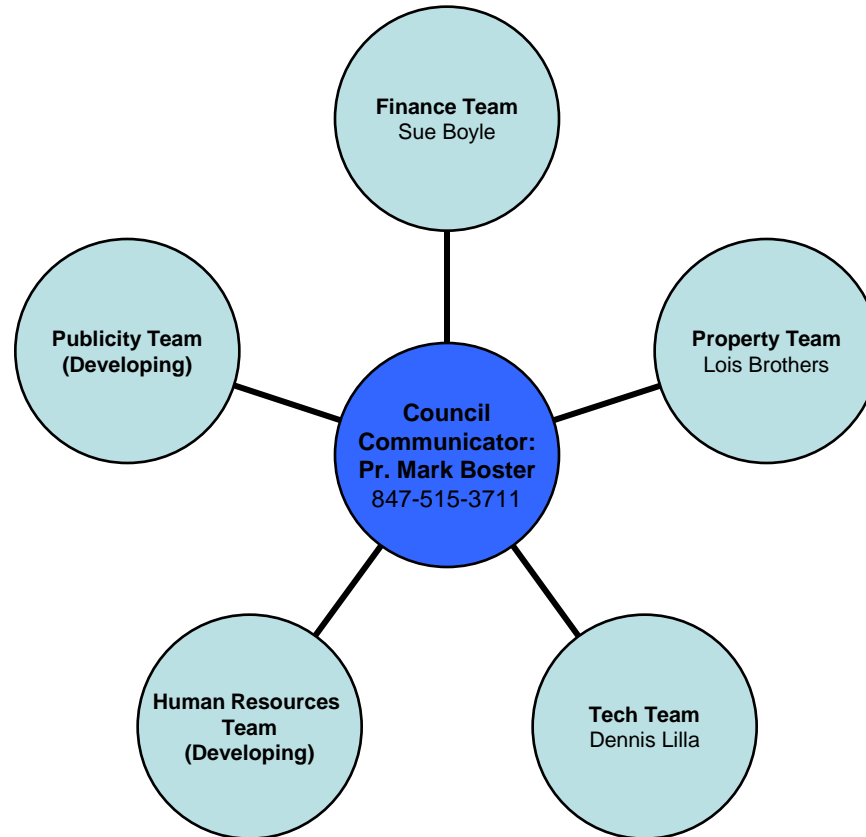
Worship:
Kathy Dahl

Our Mission: "Caring for God's Children of All Ages"

Our Vision: "Growing Disciples, Who Make Disciples"

Administration

These teams assist the pastor and council on the administrative and business matters of the congregation.



Human Resources Team:

In charge of employee policy manuals, job descriptions, personnel issues, performance reviews, compensation, and recommendations.

Publicity Team:

Publicizes SOTP and its functions to the community.

Finance Team:

In charge of financial budget and oversees SOTP financial future.

Property Team:

Supervises buildings and grounds; builds teams of volunteers to do repairs, cleaning, & general maintenance.

Tech Team:

Implements technology enhancements, maintains SOTP web site, office network, audio/visual needs, newsletter, etc.

Congregational Life

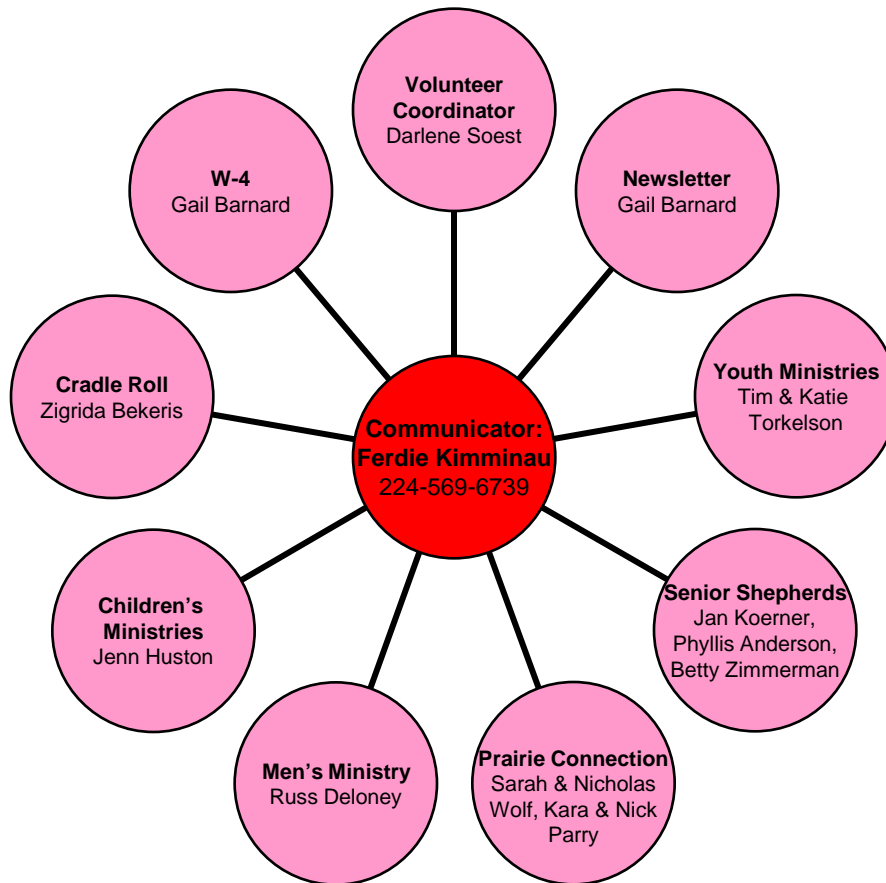
These ministries serve the spiritual, fellowship, and community life needs of the congregation.

W-4:
(Women Who Work Wonders)
Fellowship for women of all ages.

Cradle Roll:
Provides Christian information to new parents and baptismal certificates to all those baptized at SOTP.

Children's Ministries:
Provides monthly activities for children in the 3rd - 5th grades.

Men's Ministry:
Fellowship for men of all ages.



Volunteer Coordinator:
Encourages congregation members to use their gifts and abilities to help the church.

Newsletter:
Prepares the monthly SOTP newsletter.

Youth Ministries:
Builds a multi-level ministry for the youth of SOTP.

Senior Shepherds:
Fellowship for the 55 and better age group.

Prairie Connection:
Adult fellowship for singles and couples under age 55.

Discipleship

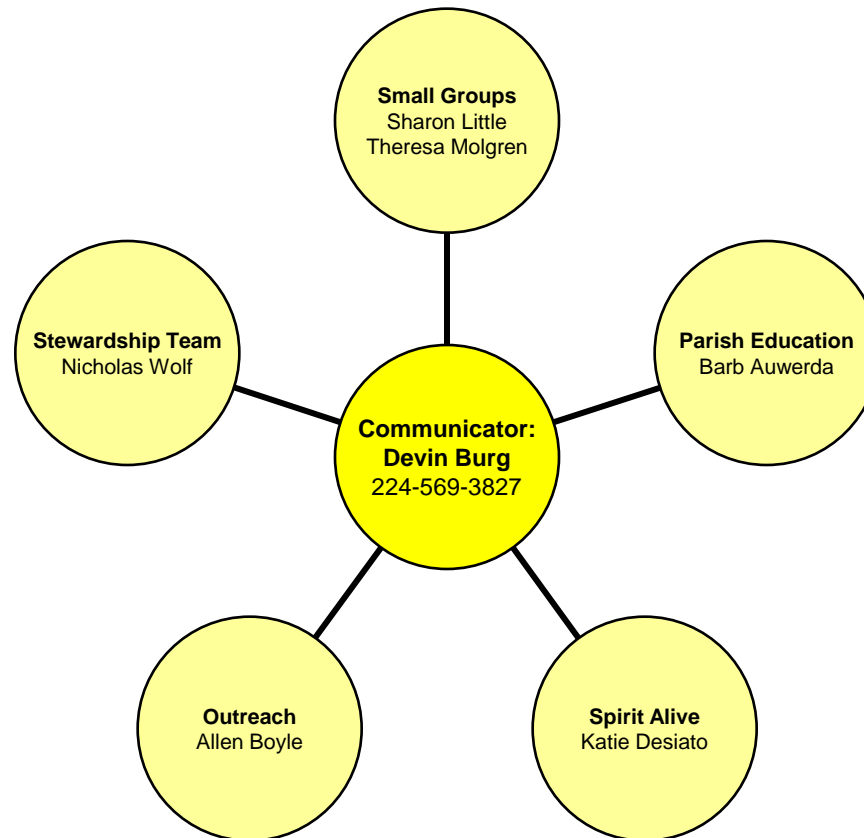
These ministries focus on growing people up in life in Christ.

Stewardship Team:

Supports and encourages members to give to the work of the church. Develops annual giving plan.

Outreach:

Teaches the congregation to do evangelism. Performs outreach and calls visitors.



Small Groups:

Fosters the ideal of SOTP becoming a congregation of small groups. Encourages opportunities for spiritual growth.

Parish Education:

Teaches children the faith through Sunday School and Vacation Bible School. Trains teachers, chooses curriculum, and buys supplies.

Spirit Alive:

Sunday education opportunity during the 10:30 service for pre-school through 2nd grade.

Caring Ministries

These ministries focus on Christian outreach and volunteer support service.

Food Pantry:

Organizes monthly drives for providing food and household supplies for needy local families.

Lay Shepherds:

Help the pastor by making hospital and home visits for sick members.

PADS:

(Public Action to Deliver Shelter)

Provides volunteer staffing one day a month for the local homeless shelter.

Prayer Team:

Prays for people with medical challenges and special needs.



Missions Programs:

Builds teams of volunteers for missions in the community and on a global level.

Health & Wellness:

Promotes holistic health and interrelationship of healthy mind-body-spirit.

Helping Hands:

Provides meals to families during times of need.

Prayer Shawl:

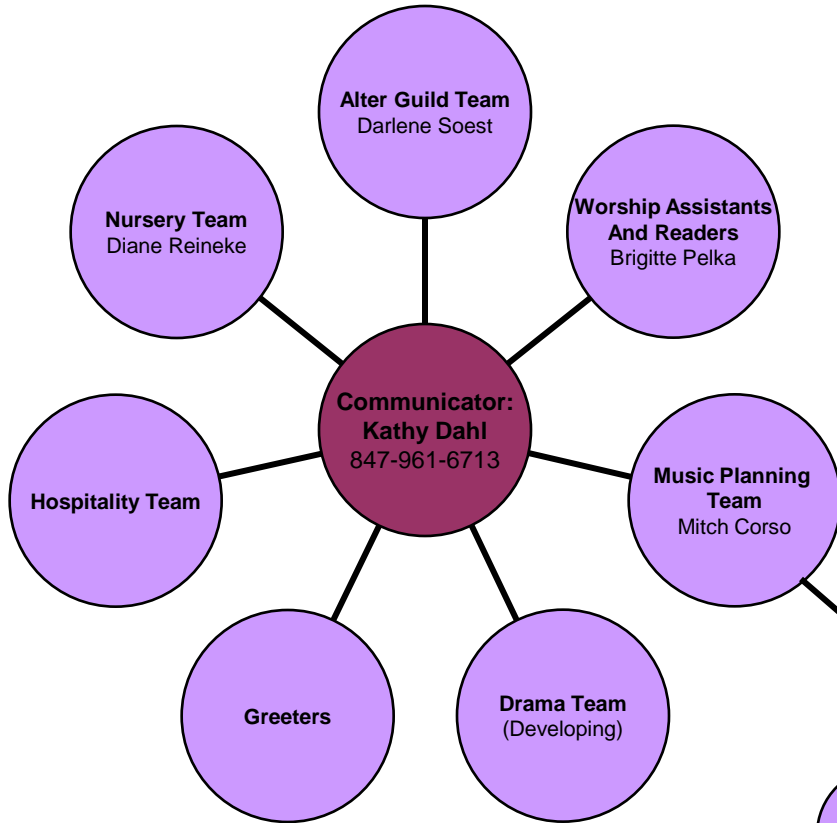
Makes and provides shawls of prayer, care, and support for those with special needs.

Prairie Points:

Makes and provides quilts to ministry organizations around the world.

Worship

These ministries are involved in the requirements of conducting worship services each week.



Alter Guild Team: Prepares for worship and communion services.

Worship Assistants and Readers: Arranges for members to perform these duties at all worship services.

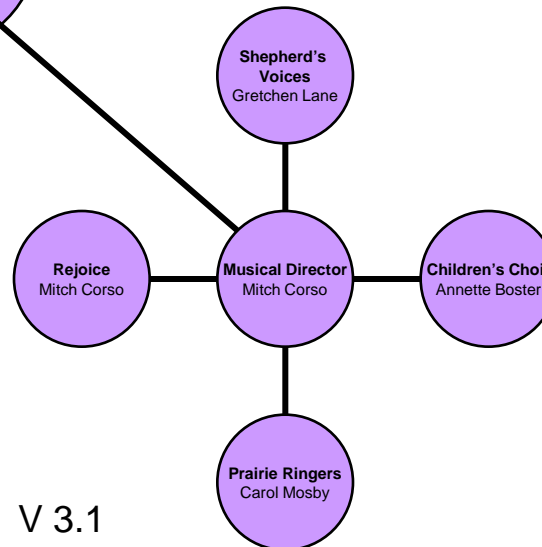
Music Planning Team: Oversees all the music of SOTP, including choirs, music groups, special music, and concerts.

Nursery Team: Provides care for little children who do not attend worship services.

Hospitality Team: Arranges for ushers and information desk.

Greeters: Greets everyone as they arrive for worship services.

Drama Team: Plans and performs skits and dramas during worship services.



Advisory Groups

Advisory groups assist the council or different teams in their ministries. They may be permanent or short-term, task-oriented as needed.

Mutual Ministry Committee:

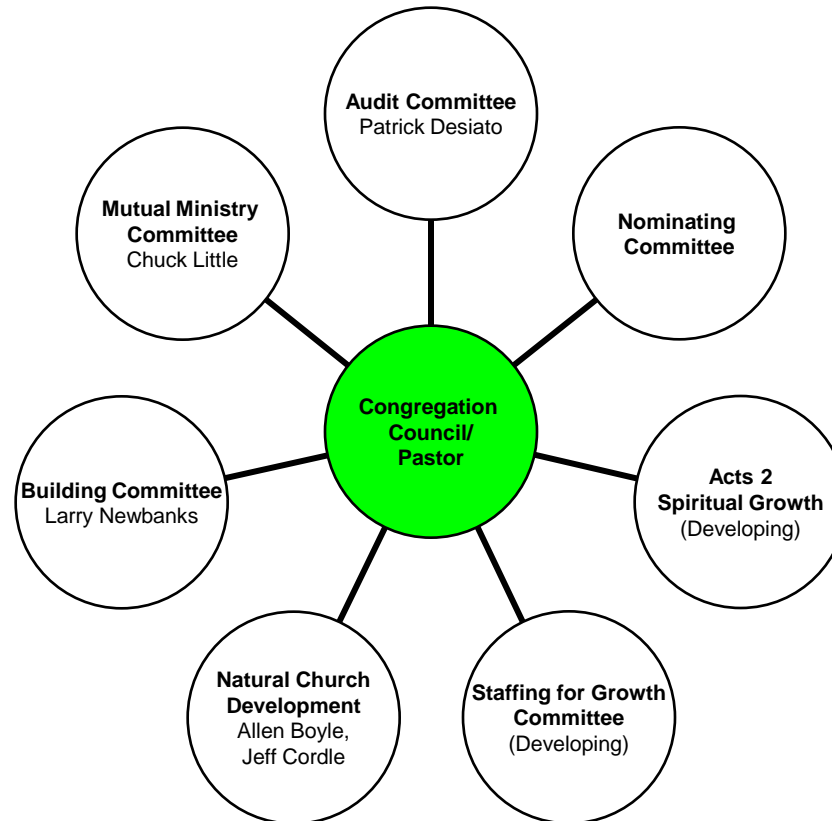
Affirms and strengthens the mission of the congregation; strengthens the ministry of the pastor and staff by listening, sharing, communicating, reviewing, caring, and praying.

Building Committee:

Oversees all aspects of the design and construction of the new church building at Main & Manhattan in Huntley.

Natural Church Development:

Performs self-assessment of congregational strengths and weaknesses.



Audit Committee:

Provides an objective annual financial audit of Faith.

Nominating Committee:

Nominates church members to serve on the Congregation Council, Audit Committee, and representatives to Synod Assembly. Members are elected at the annual meeting.

Acts 2 Spiritual Growth:

Helps to shape ministry activities of SOTP to heighten advancement of the Kingdom in our community and beyond.

Staffing for Growth Committee:

Responsible for hiring new staff.