



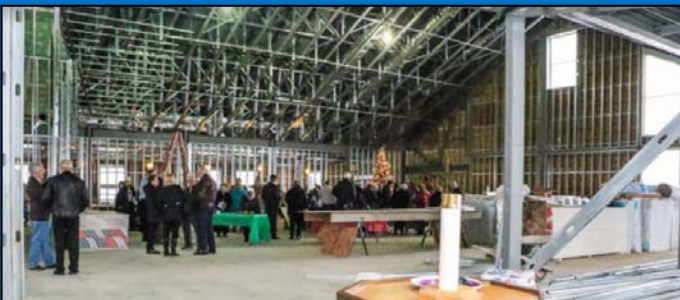
*Shepherd*  
OF THE PRAIRIE  
LUTHERAN CHURCH  
*Caring For All God's Children*

## Congregational Newsletter *January 2018*

### Statement of Purpose

*"We care for God's children of all ages by growing disciples who make disciples."*

### **"Our first Christmas in our New Sanctuary" December, 2017**



10805 Main St, Huntley, IL 60142 • Phone: 847-669-9448 • [www.sotp.org](http://www.sotp.org)  
Office Hours: 9:00 a.m.-noon, Mon-Fri

## *A Note From Pastor Mark*

Brothers and Sisters in Christ,

Have you ever found yourself in a pitch dark place?

You cannot see anything. It is difficult to sense your relationship to anything around you for you cannot see. When you cannot see it's difficult to relate. You feel isolated and alone.

This is the year of Isaiah. For the last few weeks in worship we have been reading from the book of Isaiah. One of the major themes which stretches throughout the prophetic word of Isaiah is "in the midst of darkness light shines".

Isaiah chapter 60 records the prophet's words, "For darkness shall cover the earth, and thick darkness the peoples" (vs. 2a). This is a picture of hopelessness and abandonment. It describes the condition of the people of Israel as they were taken into exile by Babylon. But soon there will be hope. "Arise, shine; for your light has come, and the glory of the Lord has risen upon you" (Isaiah 60:1).

It is God's doing an action which brings light to total darkness. The dark days of exile in Babylon will be left behind. Then the purpose of God's people will be fulfilled. All peoples will be drawn to them through the light of God. The prophet declares, "Nations shall come to your light" (Isaiah 60:3a).

Epiphany is the season of the church year when we celebrate the light that drew the Magi or Wiseman to the Christ Child. In the Christian story, people from other nations would come to see the light of the newborn child who comes to save.

As we in the northern hemisphere live in a time of darkness with short winter days, we are reminded that light is what gives us hope, too. We seek the light, both spiritually and physically. We have learned that without the light we literally become sad, even hopeless. But with light we grow strong and more hopeful.

The light of God's grace comes to us and we are reminded again that we cannot live without it.

Just as Israel was renewed by God's light, so there is renewal for us by God's light that comes to touch our lives.

Seek the light! It is essential for our life and salvation. Indeed, without the light from God's creation we would not exist. So without the light of God's salvation we likewise cannot live.

I am looking forward to wonderful adventures as we begin a new year together in ministry at Shepherd of the Prairie. Drawn by the light of Christ love and led out to shine light into the world; we venture forth!

Please join us in welcoming **The Rev. Mark Hanson as our guest preacher to Shepherd of the Prairie on Sunday, January 21.**

*(Continued on page 3)*

## *A Note From Pastor Mark (continued)*

Following his ordination in 1974, Hanson served as pastor at Prince of Glory Lutheran Church, Minneapolis, Minnesota from 1973 to 1979; Edina Community Lutheran Church, Edina, Minnesota, from 1979 to 1988; and University Lutheran Church of Hope, Minneapolis, from 1988 to 1995.

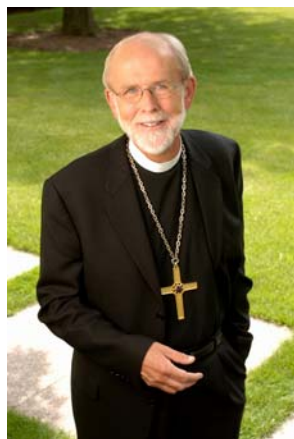
He was elected Bishop of the Saint Paul Area Synod of the Evangelical Lutheran Church in America (ELCA) in 1995, and had been reelected to a second term prior to his election as Presiding Bishop of the Evangelical Lutheran Church in America in 2001.

In 2003, Hanson was elected President of the Lutheran World Federation, a role which he served concurrently with his role as ELCA Presiding Bishop. He served on the executive council on the executive board of the National Council of Churches of Christ in the U.S.A. Hanson is author of *Faithful Yet Changing: The Church in Challenging Times* (Augsburg Fortress, Minneapolis: 2002). In 2007 Hanson was reelected on the second ballot, making him the longest-serving Presiding Bishop in the ELCA's history.

He served as Bishop of the ELCA from 2001-2013, when Bishop Elizabeth Eaton was elected as the next Presiding Bishop of the ELCA at the 2013 Churchwide Assembly in Pittsburgh, PA.

Pastor Hanson is married to lone and they are the parents of Aaron, Alyssa, Rachel, Ezra, Isaac and Elizabeth, and grandparents to Naomi, Kingston, Sam, Danielle, and Sophia. He is also brother to one of our members at SOTP, Mary Trodahl.

Please join us to welcome Pastor Hanson and lone to Shepherd of the Prairie.



*Pastor Mark*

## *Adult Education News*

Adult classes will resume on **January 7 and 10** when we embark on a study of the Old Testament prophets.

Mark your calendars now and watch for further details!

*Pastor Bill*



## Ministry Musings

Happy New Year, a time for new beginnings! A few weeks ago, Pastor Mark talked about New Year's resolutions and new beginnings. Why not make one of your resolutions this year to get involved in God's kingdom here at SOTP in a new way?



When we talk about ministry we say a lot about each of us having a gift we need to share to make the church whole and complete. But what do we mean by that? Some gifts are easy to recognize; a gifted musician, an artist, someone who works well with children, a great speaker, a natural teacher or leader.

But we all have a gift. At a prior church there was a lady who worked behind the scenes in near every event or project. Alberta was always in the kitchen, or pinning up costumes, cleaning the dishes left over after the potluck, even making sure the toilet paper in the bathrooms was always full. Once she and I were at a retreat and we were asked to identify one gift we had. When Alberta's turn came she mumbled that she didn't have any special gift. My mouth dropped open in astonishment! She didn't see her amazing gift of service and way as the joyful gift of love it was to God and to the whole congregation.

Many are like Alberta, we think if we don't have a "big" gift to give, we don't have one at all. But God wants to use each and every one of us. We each have different lives we touch in different ways. Paul spoke about the different parts in the body of Christ in 1 Corinthians 12 where he says, "...and if the ear should say, 'because I am not an eye, I do not belong to the body,' it would not for that reason stop being a part of the body. If the whole body were an eye where would the sense of hearing be? If the whole body were an ear, where would the sense of smell be? But, in fact, God has placed the parts in the body, every one of them, just as he wanted them to be."

In the same way, if we all had only the gift of music we would raise a glorious song to God, but the building would fall apart from neglect, the children wouldn't be educated about God, the communion bread wouldn't get baked, no one would go to Northern Illinois Foodbank,

*(Continued on page 5)*

## Ministry Musings Cont.

*(Continued from page 4)*

the computer information wouldn't get updated and newsletter wouldn't go out. In the same way if we were all gifted to care for and maintain the building and property, there would be no music!

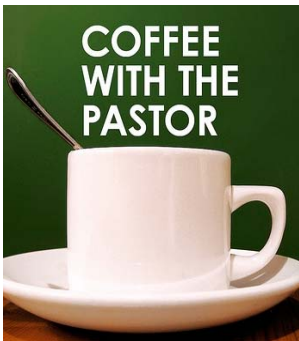
It takes all of us doing our part, whether we view those parts as small or large. Paul spoke about the different parts in the body of Christ in 1 Corinthians 12 where he says, "...and if the ear should say, 'because I am not an eye, I do not belong to the body,' it would not for that reason stop being a part of the body. If the whole body were an eye where would the sense of hearing be? If the whole body were an ear, where would the sense of smell be? But, in fact, God has placed the parts in the body, every one of them, just as he wanted them to be."

So, I challenge you this year to discover where you can connect to the body of Christ here at SOTP.

Explore your interests and talents and then find a way to use them for God. We need every one of us to make the whole community complete.

*Donna Kelly*

## VISITOR'S COFFEE



If you have visited Shepherd of the Prairie and would like to have a chance to meet with Pastor Mark and Donna Kelly (and maybe ask a few questions), we are hosting a get acquainted coffee on **January 21**. We will be set up in the middle Sunday School room in the west wing of the building (*to the right as you exit the Worship Area*).

We invite all who would like to come to join us from 10am until about 10:40. This will be a chance to meet each other in a very casual

"open house" kind of setting.

Hope to see you there!

Contact: Donna Kelly [Donna@sotpmail.com](mailto:Donna@sotpmail.com) 847-669- 9448



## NEW MEMBER GATHERING



If you have been worshipping with us for a while here at SOTP and would like to know more about us as a worshipping community, we would love to have you join us at our New Member Gathering. We will be offering the gathering on **Sunday, February 18th from 3:00-5:30 pm**. This will be an opportunity for you to learn more about the life and ministry of SOTP and for you to consider prayerfully whether or not you want to formally become a member of the SOTP family.

We will welcome new members on the following Sunday February 25th. If you have any questions, please contact either Pastor Mark or Donna Kelly through the church office.

## OUTREACH MINISTRY ~ HUNTLEY EXPO

Save the date! March 3rd Shepard of the Prairie will be participating in the HUNTLEY HOME, BIZ & WELLNESS EXPO.



We are already registered for this event and we need your help. The Church will be hosting a booth at the expo to promote our ministries and to share the Love of Jesus with our community.

Please plan on spending a couple of hours on March 3rd to greet people that visit our booth.

**A sign up sheet will be distributed soon or feel free to contact Mike Yndestad at 630-291-5364 to get your hosting time slot.**

**LOCATION: HUNTLEY PARK DISTRICT 12015 MILL STREET HUNTLEY**

**DATE/TIME INFORMATION: SATURDAY, MARCH 3, 2018 9 AM - 4 PM**

**SEE YOU THERE!**

## PADS



### **What is PADS?**

Public Action to Deliver Shelter (McHenry County founded 1988). This program is not government supported. Since 2009, PADS reports a 51% increase in people needing help (33% increase in homeless individuals diagnosed with mental illness 54% increase in chronically homeless and 46% increase in transitional youth).

### **How does SOTP help?**

We make lunches and serve dinner. Preferably five volunteers are needed. Youth volunteers are welcome (depending on maturity level and if they are able to sit still for one hour following directions without adult supervision). We meet at SOTP Sunday evenings at 5:45 p.m. to make lunches for the shelter, and then transport lunches (including donations) to Bethany. We serve dinner from 7:00 to 8:00 p.m. Jill Brown shops for supplies. This is a ministry that is allocated in our church budget.

### **When?**

The 4th Sunday of the Month, October through April.

### **To sign up:**

Use our PADS online form at [www.goo.gl/hi8WKv](http://www.goo.gl/hi8WKv) or contact Becky Hennessy 847-961-6050 ( [k.b.hennessy@sbcglobal.net](mailto:k.b.hennessy@sbcglobal.net) ) or Jill Brown 847-683-5027 ( [jillbrown14@yahoo.com](mailto:jillbrown14@yahoo.com) ).

### **Where?**

We support Bethany Lutheran Church every 4th Sunday at 76 W Crystal Lake Ave in Crystal Lake IL 60014. This is only a 15 to 20 minute commute from SOTP. Linda is our contact at Bethany--she has been in charge of that facility for over 25 years and will assign your job. There are 7 churches in McHenry County that provide overnight shelters rotated Monday through Sunday) from 7:00 p.m. to 7:00 a.m. A transportation bus is used to commute the homeless between the churches.

*Contact: Jill Brown [jillbrown14@yahoo.com](mailto:jillbrown14@yahoo.com)*

## FEED MY STARVING CHILDREN

Feed My Starving Children volunteers needed! What a great way to show your love for others, than to serve at FMSC in the month of February. We will be serving as a church on **Saturday February 17th from 9:00am until 11:00am**. We will meet at FMSC in Schaumburg

by 8:45am. If you have served in the past, thank you! Please consider joining us again. If you are new, please join us! It is a wonderful morning and will leave you feeling the love! Please contact Jill Brown 847-683-5027 or [jillbrown14@yahoo.com](mailto:jillbrown14@yahoo.com) for more information. Please look for the sign up sheet in the Crossroads.



## SEND KIDS THE WORLD

SOTP Mission team and GEMS will work together again on the postcard project this coming spring. Since many of you travel over the holidays and possibly over the winter, it is a great time for you to start collecting postcards for donating to GEMS at SOTP. It is quite important postcards selected are eye appealing to children.



This is a very heart moving project. Check it out on your computer, <http://sendkidstheworld.com> Send Kids the World is an Internet site that describes kids with life threatening illnesses and injuries (*parent submitted*) and enables you to reach out to them and send them encouraging postcards from all anywhere and everywhere. Feel free to send cards on your own, or feel free to donate them to SOTP.

This is a great way to share God's love for one another. As Ephesians 4:32 says, "Be kind and compassionate to one another."

## MINISTRY OPPORTUNITIES

Recently, we celebrated our Ministry Opportunities, both those we are already participating in and those we would like to explore.

If you haven't already completed and returned your Ministry Opportunities from, please be sure to do so this weekend.

**You can also complete it online at**  
**[www.goo.gl/irWWns](http://www.goo.gl/irWWns)**

If you have any questions please contact Donna Kelly at [donna@sotpmail.com](mailto:donna@sotpmail.com) or 847-669-9448.





## NORTHERN ILLINOIS FOOD BANK

### NORTHERN ILLINOIS FOOD BANK

Feeding Our Hungry Neighbors | Volunteer. Donate. Get Involved.

WWW.SOLVEHUNGERTODAY.ORG

Please hold the date and mark your calendars accordingly for **Saturday, May 19, 2018** so you can help do God's Work with Your Hands at the Northern Illinois Food Bank. The Mission Team has committed our church to provide 70 volunteers to help put together food items to feed our hungry neighbors. If needed, there are also sit-down jobs that contribute to the projects. Simply let us know. Whether you have been there or not in the past, you will discover how great it feels to assist.

A Saturday date was chosen so that families (children minimum age 8) have a better chance of participating together. It is a great learning experience for people of all ages. Please consider signing up. If you have any questions, or want to sign up, please call Dave or Sharon Stangle at 224-628-2107 or email [stangle.ds@gmail.com](mailto:stangle.ds@gmail.com)

As in the past, participants are invited to meet at church by 8:00 AM and travel to 273 Dearborn Ct., Geneva, IL, or you can go directly there and arrive by 8:45 in time to confirm registration, gather together for a prayer, and begin working at 9:00. The project will end by 11:30. Participants are welcome to carpool together. If you need assistance in organizing a carpool, we are happy to assist.

As the Isaiah 58:10 tells us, "Feed the hungry and help those in trouble, then your light will rise and the darkness around you will be as bright as day."

## HABITAT FOR HUMANITY



We need 4-6 volunteers to help at the Habitat for Humanity Resale shop in Elgin **January 18, February 15, and March 15**. We are looking to book 3-hour shifts.

Contact Carl or Sandy Hupert: 224-569-6041 or [Carlhupert@gmail.com](mailto:Carlhupert@gmail.com) [Sandyhupert@gmail.com](mailto:Sandyhupert@gmail.com).

## STEWARDSHIP

From the Constitution and Bylaws of our congregations: "Stewardship – educates and encourages members to offer their time, talents and money for the church's ministry."

## STEWARDSHIP

Join the discussion at this **January's 2ND TUESDAY, 10:00AM.**

Well, the session in December was a NO SHOW. My plan was to provide some information about things we could have done as 2017 was coming to an end. So now we can look at some of those same things as the year 2018 begins. You might want to make some additional New Year's Resolutions? So the conversation on January 9 will include but not be limited to:

- How can Grandparents help their Grandchildren go to college?
- How can we gift a little (like up to \$14,000) free of federal gift tax?
- How are we doing with retirement savings?
- Have we talked with our families about long term care?
- Do we have a will ... a current will?
- Have we decided who can act on our behalf?
- Maybe by that time we will all have a better understanding of the new tax plan?

Curt Gerald

curtgerald61@gmail.com

## LITTLE LAMBS REGISTRATION COMING SOON



We will start accepting registration for the 2018-2019 school year on **February 1st.** Our preschool has programs for children ages 2-4 (by September 1, 2018).

**CHILDREN DO NOT NEED TO BE POTTY TRAINED.**

Our class sizes are small (not more than 10-12 per class). 1, 2, 3 or 4 day classes are available to both members and non-members. For more

information please contact Jill Gillming at [LittleLambs@sotpmail.com](mailto:LittleLambs@sotpmail.com) or go to our website and look under FORMS for CLASS REGISTRATION.

## GRIEF JOURNEY SUPPORT GROUP

If you have lost a loved one and would like to be part of a group that can provide support, comfort and ideas for journeying through this season of grief, we here at Shepherd of the Prairie would like to provide that kind of opportunity for you. There are no requirements, or need to commit to a specific length of time to attend nor that you must attend every session; you don't even need to speak except to introduce yourself and tell us who you have lost. There is no charge for participation in this group.



This group is for all who have lost a loved one whether it is a spouse, a parent, a sibling, a child, a grandchild, a friend or any other relational loss. We will meet on the 2nd and 4th Tuesdays of each month at Shepherd of the Prairie at 6:30 pm starting on **January 9th**. If you have any questions or to sign up, please contact Donna Kelly at [donna@sotpmail.com](mailto:donna@sotpmail.com) or 214-676-1788 or through the church office.

## GEMS GIRLS' CLUB



Upcoming GEMS Girls' Club Dates:

Wednesdays from 6:00 - 7:00 pm

**January 10 & 24**

**February 7 & 21**

**March 7, 14 & 21**

## HOPPENSTEADT THANK YOU

The Don Hoppensteadt family sends a big thank you for all who kept us in their prayers the past three months. Your calls, cards, pastor's visits, attending the service, memorials and food for the luncheon will never be forgotten. Blessings to all who brought comfort to us and our family. Barb, Jim and Juli Hoppensteadt



## POINSETTIA PURCHASE THANK YOU!

Dear Congregation, Thank you for helping us decorate the sanctuary with beautiful poinsettias for Christmas. As you can see, the church looked just gorgeous. Thank you for your support in providing the flowers to grace the room.

The Worship Committee



## CHRISTMAS GREETINGS TO SOTP FAMILY

The following people decided to wish their entire Shepherd of the Prairie family a



**MERRY CHRISTMAS AND BLESSINGS FOR THE COMING YEAR!**

by making a donation to the new addition instead of spending the money on cards and postage:

- \* Donna Kelly \* Marian Mesenbrink \* Ginny Pulver \*
- \* Lou & Darlene Soest \* Ralph & Sue Wehnes \*
- \* Dave & Sharon Stangle \* Joanne Bychowsky \*
- \* Bob & Carolyn Malm \* Don & Jan Koerner \*
- \* Ed & Carolyn Cuttle \* Mary Lou Chamberlain \*

## TRIVIA NIGHT ~ SAVE THE DATE!

Creation Restoration 8.0

Trivia Night

**Sunday, April 22, 5:00pm**



## COMMUNITY OF CARING BOARD



The Community Of Caring board is used to make members and friends of Shepherd of the Prairie aware of various ministries available in the immediate area (within 10 miles of SOTP) who may be going through personal crisis or have a specific need which may be addressed.

The board is on the wall between the bathrooms in the east end of the building. To add something to the board please consult with Pastor Mark.

## SOTP MUSIC MINISTRY REHEARSALS

### CHILDREN'S BELLS & CHOIRS Wednesdays

- ⇒ Blessings Choir (3rd - 8th grade)  
4:30 - 5:10 pm (K-1 Room)
- ⇒ Cherub Choir (toddlers - 2nd grade)  
5:00 - 5:20 pm (Big Sunday School Rm)
- ⇒ Chimers ring & sing (kindergarten - 2nd grade)  
5:30 - 5:50pm (Big Sunday School Room)
- ⇒ Jubilate Bells (3rd grade - 5th grade)  
5:15 - 5:50 (Sanctuary)



### ADULT HANDBELLS Tuesdays, 7:00 - 8:30pm

### ADULT CHOIR Wednesdays, 7:15 - 8:15 pm

Contact: Jane McMullen Jane@sotpmail.com

## PRAIRIE CRAFTERS THANK YOU



We want to thank each and everyone who helped the Prairie Crafters this year. Whether you donated supplies, finished crafts or purchased our crafts you were an integral part of making our sales a success.

With your help this year we have earned and donated **\$7,917.90**. Alice Hallett and the Prairie Crafters

## SOTP PRAYER CHAIN

Shepherd of the Prairie is blessed with a wonderful prayer chain.

If you have a prayer request that you would like to add, or if you would like to start receiving the distribution and start praying for those that need them, e-mail

**SOTPprayers@gmail.com**. Lists are in the Friday Flourish and as a printout on the usher's table.



Contact: Donna Kelly Donna@sotpmail.com 847/669-9448



## GIVING TREE THANK YOU

A BIG thank you to all who donated to the Giving Tree. You made twenty five families have a Merry Christmas. Ten quilts were given from our quilters and Sue Wehnes, many extra gifts and gift cards were also received. I thank all my helpers, and my second driver Judie, for sorting all the gifts by families. Grafton Food Pantry and Turning Point are so thankful for the gifts and they say THANK YOU TOO. Barb Hoppensteadt.



## ALTAR FLOWERS FOR 2018



The altar flowers lists for 2018 are posted in the Crossroads. If you would like to donate flowers for a weekend, please sign up now. To pay your \$25 for donating one bouquet of flowers for the weekend, please mark clearly on your offering envelope that \$25 is for ALTAR FLOWERS.

Please take the flowers home with you after to enjoy the 10:45 am service. Thank you for your partnership in ministry.

## SUPPER CLUB

THE EARLY BIRD GETS THE WORM.

START YOUR NEW YEAR RIGHT. AND EAT, MEET AND GREET in fellowship with other "SOTPers"

Once again, Winter season, Supper Club is almost upon us..

Four (4) times During January 2018 through APRIL 2018 we will be sharing hospitality and food within small groups of 6 to 8 people. Groups are made up from the sign up list. Singles are welcome.

Each group determines what, when and how they will meet. Often one home hosts the main meal while others bring salad, desserts, etc. Some groups decide to "eat out" or "order in" for one or all of their meals it is up to the folks in that particular small group.

Sign up as soon as you can on the yellow signup sheet is on the bulletin board in the Cross Roads area or on line by going to [www.goo.gl/pLejiz](http://www.goo.gl/pLejiz). Groups will be determined by mid January.



## THE OUTREACH TEAM WANTS YOU!

Did you know that we have an exciting ministry at SOTP called the Outreach Ministry?

Be a part of community events with your brothers and sisters in Christ and help our Outreach team promote our church while making Jesus known in Huntley.

The Outreach Ministry wants you! For more information contact Mike Yndestad:

Mike@yndyproductions.com 630-291-

5364 or come to the next ministry meeting night the second Monday of each month at 7 PM. See you there.

**The church  
has left  
the building.**



## FOOD PANTRY

### Weekend of January 6 & 7

is Food Pantry Collection Weekend at SOTP before all services

#### NEEDS THIS MONTH:

- ⇒ Cereal
- ⇒ Crackers
- ⇒ Toothpaste
- ⇒ Deodorant

*Thank you so much  
for your faithfulness  
in donating to the  
Food Pantry.*



**AND AS ALWAYS,  
CHECKS MADE OUT TO  
SOTP THAT STATE  
“FOOD PANTRY” IN  
THE MEMO WILL BE  
FORWARDED  
TO THE FOOD PANTRY.**

Contact: Alice Hallett [agrndmom3@gmail.com](mailto:agrndmom3@gmail.com)

## FEMALE FRIDAYS

Join the women of SOTP for a night out! These nights are for all women of SOTP to get together for a night of dinner and fellowship.

**The next Female Friday is**

**Friday, January 12th at 6:00 pm**

**Jameson's Restaurant in Huntley**



**Please RSVP** to Joanne Schwartz at 847/659-1740 or [joanneschwartz@comcast.net](mailto:joanneschwartz@comcast.net) by January 7th so we can have a reservation big enough to accommodate everyone.

Looking forward to seeing you!

## YOUTH CULTURE—IMPORTANCE OF REGULAR SLEEP TIMES

With school getting in full swing for our kids, it's a good time to be reminded of just how important it is for you to instill good sleep habits in your children who are students. Whether they are attending middle school, high school, or college, our kids need their sleep. Researchers from Brigham and Women's Hospital in Boston have found that going to sleep and waking up at approximately the same time every day is just as important as the number of hours one sleeps. While researchers still don't have a handle on cause and effect, they have discovered that irregular patterns of sleep and wakefulness are associated with lower grades. It seems that the release of melatonin and one's body clock shift to nearly three hours later for those with irregular schedules, as compared to those who are consistent with their sleep times. Teach your children that God has created their bodies for a rhythm of work and rest. Getting sleep at the right time is a matter of stewardship.



## YOUTH CULTURE NEWS

### YOUR TEEN AND ANXIETY

Back in the summer of 2016, 17-year-old teenager Felix Alexander took his own life. Since then, his mother has dedicated her life to helping other parents understand the role that social media plays as the new “playground” for cyber-bullies, and the role cyber-bullying plays in making an already difficult transition from childhood to adulthood that much harder.



Lucy Alexander says that once the already isolated and excluded Felix's peers began spending time on social media, the 24/7 barrage of anonymous negative comments began. Sadly, Felix wasn't even on a computer or smartphone at the time. He simply knew that negative things were being said about him by people he knew. . . and even people he didn't know. He was called a “black rat”, “ugly”, hated by everyone, and other nasty things.

We need to realize that bullying is more pervasive and powerful in today's world. In the old days, traditional bullies would ply their trade on the playground or in the neighborhood. If you were on the receiving end of their taunts, you could find relief and refuge in the comfort and safety of your own home. Now that our kids spend less and less time outside and more and more time “living” in the virtual

*(Continued on page 17)*

## YOUTH CULTURE NEWS (CONTINUED)

*(Continued from page 16)*

online world, bullying has taken on new forms with increased intensity that continues around the clock. A nasty note passed around the classroom stayed in the classroom and was seen only by the hands it touched. Now, that same note can be posted online and go viral – through the school, the community, and the world.

Cyberbullying occurs when a child or teen intentionally intimidates or sends unflattering or hostile messages or threats via digital media to another child or teen or about another child or teen in order to harass, hurt, stalk, frighten, extort, humiliate or harm that person. Cyberbullying always involves minors. If an adult is involved, the behavior is then classified as cyberstalking or cyberharassment. With more and more of our younger kids now venturing onto the digital frontier, cyberbullying is increasingly prevalent even at the elementary school level.

Here are five steps you can take with your kids to help prevent cyberbullying.

- Pray for your children and their friends.
- Build resilience to peer pressure by helping them understand what it means to find their identity and security in Jesus.
- Teach your kids to treat all people with the love, grace, and mercy of Jesus.
- Teach your children to take a stand in defense of bullying victims.
- Educate your children about the consequences of cyberbullying others.

In today's world, sticks and stones aren't the only thing that hurt. Words hurt too. . . and they hurt badly. Keep an eye on what your kids are doing online and be sure to instill in them a deep respect for the words of Ephesians 4:29: "Do not let any unwholesome talk come out of your mouths, but only what is helpful for building others up according to their needs, that it may benefit those who listen."

Finally, as Lucy Alexander recommends, "From the moment you give your child a phone, you need to have a conversation running with them all of the time, what they are doing, who they are doing it with and what platforms they are using."

*(For more information and helpful resources on cyberbullying and to download a free copy of A Parents' Guide to Cyberbullying, visit our Digital Kids Initiative at [digitalkidsinitiative.com](http://digitalkidsinitiative.com).)*

## From The Word

God never promises that our lives will be easy. We

live in a broken world as broken people. Hardships, distress, and troubles often times come our way. When we are blessed with the gift of children, our family grows with the addition of more broken people. Therefore, the opportunities for difficulty to visit our homes increase. Realizing these things is not taking a pessimistic view of life, but rather a realistic view of life.

But we can't stop by lamenting our brokenness. A fully realistic view of life is a view that realizes the fact that we can turn to God in our times of difficulty to find hope. In Psalm 40, we read David's confession of trouble and distress. He describes himself as crying as he is stuck in troubles that he calls a "slimy pit" filled with "mud" and "mire." But this swampy ground of life's troubles are not where God allows him to remain. Rather, they are an occasion for God to answer his prayers by lifting him out of the difficulties.



Life throws all kinds of difficult situations at us. Add children to the mix and the difficulties seem to come at us faster and harder. But David reminds us that that when we trust in the Lord, we have a help and a deliverer. We are truly blessed when we make the Lord our trust (Psalm 40:4). Parents, trust in the Lord not just when life is difficult, but at all times.

### YOUTH CULTURE HOT QUOTE

"Most parents have dreams of their kid being the next star. Percentages show most kids won't go pro, but sports provide all kinds of opportunities to grow as a human being. Parents go wrong by focusing too much on winning."

*-Two-time Olympic gold medalist and retired soccer player Abby Wambach, speaking about what parents can do to ensure that their child's athletic participation is a positive experience, washingtonpost.com, October 23, 2017.*





## Trends

### *Cosmetic Plastic Surgery*

Plastic surgery is a good thing when it serves to correct physical abnormalities that decrease our ability to live a fruitful and healthy life. These types of procedures are known as medically necessary plastic surgery. But in recent years, there's been a steady growth in what is known as cosmetic plastic surgery. These surgeries tend to be rooted in our growing sense of vanity regarding physical appearance, and our desire to reverse the aging process. According to the American Society for Aesthetic Plastic Surgery, U.S. spending on purely cosmetic procedures and minimally invasive procedures has increased from twelve billion dollars annually in 2014, to sixteen billion dollars in 2016. Parents, our culture increasingly tells us and our kids that our value and identity is connected to outward standards of beauty and appearance. This is absolutely contrary to the message of the Scriptures. God looks on the heart. Teach your kids to cultivate their hearts.



## Latest Research

### *Sports Parenting*

Here's a suggestion for parents whose kids are involved in organized sports: next time you attend one of your kids' games, spend less time paying attention to what your son or daughter is doing out on the field, and more time examining your own sideline behavior. Researchers are telling us what we should have noticed about ourselves a long time ago. That is, we're increasingly becoming a bunch of bad sports, so much so that many youth leagues are issuing written and verbal announcements prior to games warning that inappropriate gestures and profanity will not be tolerated and will result in the expulsion of violators from the game. Research from the University of Maryland indicates that fifty-three percent of parents report getting angry at their child's game, and forty percent report yelling at the ref. Parents, your Christian faith and love for Christ should stretch to and through every area of your life. Does your sideline behavior bring honor and glory to God?

- 87% of adults surveyed who played outside when they were young still held a love of nature into adulthood. (*Australian Journal of Environmental Education*)
- 70% of recent and soon-to-be college grads said they wouldn't bother keeping social media accounts anonymous out of fear of putting off potential employers. (*Red Bull Wingfinder*)

## QUICK STATS

## FINANCIAL NEWS

Treasurer's Report as of November 30, 2017

2018 Annual Budget: God has truly blessed us. The proposed 2018 Annual Budget will be increased to meet the expected growth occurring as a result of the New Sanctuary and increased Pastoral needs with our growing congregation.

*faith and*  
**finances**

General Fund Operating Income and Expenses are within the Annual Budget and Contributions continue to be strong. Through the month contributions Year-To-Date exceeded the budgeted amount by \$28,770 and expenses Year-To-Date are under the budgeted amount by \$19,204. Operating income Year-To-Date(YTD) exceeded expenses by \$47,660.

Building Fund The Building Fund Balance reflects drawing funds from the Construction Loan. Loan funds are used to pay construction costs each month. Expenses related to the new building were \$409,833 for the month and Total Building Fund Expenses were \$1,318,188 Year-To-Date including construction payments. During the month Forward in Faith donations totaled \$34,429. We are counting on an average of \$40,000/month in Forward in Faith donations to meet our construction obligations.

Fixed Assets As construction progresses on the new building so will there be a significant increase in the value of the Fixed Asset for Building and Grounds. This account has been updated and as of November the increase is \$1,488,216 higher than last year.

<b><u>GENERAL FUND</u></b>	YTD Actual	YTD Budget	Over/Under
Income:	\$ 586,956	\$ 557,931	\$ 29,02
Expenses:	\$ 544,874	\$ 557,406	\$ (12,532)
Net Income:	\$ 42,082		
Fund Balance:	\$ 128,514		

<b><u>BUILDING FUND</u></b>	
Income:	\$ 235,904 (\$200,000 from Loan proceeds)
Expenses:	\$ 409,833
Fund Balance:	\$ 110,276

Respectfully Submitted, Daniel L. Wentzloff, Church Treasurer

## ANNOUNCEMENT ABOUT STOCK DONATIONS

- Consider donating appreciated securities to church.
- Most publicly traded securities with unrealized long-term gains can be donated to church.
- You can then claim the fair market value as an itemized deduction on your federal tax return up to 30% of your adjusted gross income.
- You won't owe capital gains taxes because the securities were donated, not sold.
- If you wish to make a larger contribution (\$10,000 or more), look at establishing a donor-advised fund.
- Most mutual fund companies offer this charitable-giving program.
- Contact: Dan Wentzloff, danwentzloff@gmail.com or Dave Shotick Dave@sotpmail.com

Donate Stock

## JANUARY BIRTHDAYS

- 1.....Tom Keane, Caitlin Ross, Nellica Seibert
- 2.....Ava Allison, Mel Kling, Evan Reincke
- 3.....Vik Bekeris, Phil Casablanca,  
Riley Dobrolinsky,  
Jessica Panella, Gretchen Rossman
- 4.....Mark Miley
- 5.....Sandy Petersen
- 6.....Denis Minutillo, Elaine Neukirch,  
Jacqueline Petersen, Nel Quam
- 8.....Liss Kundich, Barb Niemiec,  
Elizabeth Rojas
- 9.....Aidan Conway, Linda Murphy,  
Michael Parmele, George Sebastian
- 11.....Joan Doege
- 12.....Lanita Palermo, Jack Trevino
- 14.....Kurtis Arndt, Larry Newbanks,  
Evelyn Olbrich, Robert Petersen
- 15.....Dinah Lindsey, Joyce Thompson
- 16.....Steve Conway, Tom Eberly, Nancy Zunker
- 17.....Rick Behm, Christian Kasal, Emilie Ulmer
- 18.....Steven Brown, Connor Martin, Joan Smith
- 19.....Eliott Burg, McKenzie Fulcer, Jeff McNeal,  
Ruth Roper
- 20.....Loretta Brindell, Daniel Hibbeler,  
Pam Luedtke, James Murphy,  
Tim Torkelson
- 21.....Shannon Mejdric
- 22.....Bill Berens, Tracy Blanchard,  
Melody Emery, Shayne Piskule,  
Katie Torkelson, Hailey Trudeau
- 25.....Kevin Hennessey, Claudia Morgan,  
Benjamin Sparks
- 26.....Sophia Burian, Marilyn Schnake,  
Pamela Walloch, Dorothea Wills
- 28.....Bradley James, Audrey Schmidt
- 29.....Justin Prather
- 30.....Patrick Fleener

## STAFF & COUNCIL

### STAFF

#### **Pastor Mark Boster**

847-515-2713 (Home)

[pastormark@sotpmail.com](mailto:pastormark@sotpmail.com)

#### **Pastor Bill Waxenberg**

*Director of Adult Education*

[pastorbill@sotpmail.com](mailto:pastorbill@sotpmail.com)

#### **Greg Dowell**

*Youth and Family Ministries*

Coordinator [greg@sotpmail.com](mailto:greg@sotpmail.com)

#### **Jill Gillming**

*Little Lambs Preschool*

[LittleLambs@sotpmail.com](mailto:LittleLambs@sotpmail.com)

#### **Tyler Greene**

*Contemporary Worship Leader*

[Tyler@sotpmail.com](mailto:Tyler@sotpmail.com)

#### **Donna Kelly,**

*Connections Facilitator*

[donna@sotpmail.com](mailto:donna@sotpmail.com)

#### **Dennis Lilla**

*Technology Support Manager*

[dennis@sotpmail.com](mailto:dennis@sotpmail.com)

#### **Jane McMullen**

*Director of Music & Worship*

[jane@sotpmail.com](mailto:jane@sotpmail.com)

#### **Michelle Rankin**

*Office Manager*

[michelle@sotpmail.com](mailto:michelle@sotpmail.com)

#### **Dave Shotick**

*Accounting Administrator*

[dave@sotpmail.com](mailto:dave@sotpmail.com)

#### **Michael Waal**

*Organist/Piano Accompanist*

[michael@sotpmail.com](mailto:michael@sotpmail.com)

### CONGREGATION COUNCIL

**Marlene Boehler, President**

**Matt Greene, Vice President**

**Amy Brittain, Secretary**

**Dan Wentzloff, Treasurer**

**Adam Adams**

**Cliff Dungey**

**Bud Hansen**

**Sheri Ott**

**Nancy Ottinger**

# JANUARY SCHEDULES

		Jan 6 & 7	Jan 13 & 14	Jan 20 & 21	Jan 27 & 28
Presiding Minister		Pastor Mark Boster			
Altar Guild	5:00 SAT	Becky Tuzik, Sue Mattiucci, Tom & Darlene Polzin			
	9:00 AM	Jackie Elkin & Marilyn Schnake			
	10:45 AM	Sandy Hupert Merrily Burkland	Sandy Petersen Marlene Boehler	Jan & Don Koerner	Pam & Darren Walloch
Altar Flowers	Weekend				
Bulletin & Newsletter Folders	FRI	June Kobler Annette Carlson	Marian Mesenbrink Marlene Tresp	Barb Krmpotich Jill Hoffman	Elaine Neukirch, Donna Turner, Alice Hallett, Lisa Bradford
Communion Bread	SUN	Sue Wehnes	Jen Kolcz	Renae Greene	Pam Perrot
Counters	MON	Warren Brody, Ralph Wehnes, Dorothy Wills			
Greeters  <b>HELP NEEDED</b>	5:00 SAT	Stevie Massei	Steve Murphy	Karen Eckert	Randi Dawson
	9:00 AM	Joan Doege Terry Halpin	Alice Murphy Terry Halpin	John Arneson Terry Halpin	Carol Roth Terry Halpin
	10:45 AM	Bob & Carolyn Malm			
Nursery  <b>HELP NEEDED</b>	9:00 AM	Jen Powe	Jen Kolcz	Judie Symbol	Jen Powe
	10:45 AM	Jen Nagel	Blue Geller	Sandy Hupert	Layne Jodway
	Clean Up	Judie Symbol	Blue Geller	Sandy Hupert	Jen Powe
Rejoice Worship Band	10:45 AM	VOCALS: Jim Rhode, Kim Szekely GUITAR: Grant Jahr	VOCALS: Dana Turk, Jen Huston GUITAR: Grant Jahr	VOCALS: Annette Boster, Kim Szekely, Sheri Ott	VOCALS: Alan Torkelson, Nicole Jachec, Sam Johnson, Shonna Rankin, Sophie Dowell GUITAR: Harry Choin, Trevor Dowell DRUMS: Brian Buesing KEYBOARD: Michael Waal
Sound	5:00 SAT	Dan Wills	Dan Wills	Dick Brush	Dick Brush
	9:00 AM	Jim Rice	Tom Polzin	Jim Rice	Josh Harding
	10:45 AM	Brian Ott	Tim Torkelson	Brian Ott	Tim Torkelson

## WEEKEND HELP NEEDED

- **USHERS:** Andrew Szekely      aszekely01@hotmail.com
- **NURSERY:** Jen Powe      jen330@gmail.com
- **GREETERS:** Dolly Cardascio      lendolly@aol.com

*You can also contact the office to help find your niche in our SOTP family.*

## JANUARY SCHEDULES (Cont.)

		Jan 6 & 7	Jan 13 & 14	Jan 20 & 21	Jan 27 & 28
Ushers  <b>HELP NEEDED</b>	5:00 SAT	Denis & Carol Minitullo	Jim & Diana Murphy	Carol Hartman Sue Mattiucci	Randi Dawson Steve Murphy
	9:00 AM SUN	WAYNE SCHMIDT Warren Brody John Jensen Walter Lempke Joanne Bychowsky	JACK CONTI Merlyn Thompson Harriet Thompson Marlene Tresp	VIK BEKERIS Dan Wentzlof Dick Maiman Chris Solem Dave Stangle [A] Sharon Stangle [A] Roy Rankin [A] Carol Engstrom [A]	ED CUTTLE [A] Carolyn Cuttle [A] Jeff Stipes [Lead] Harold Doege Joan Doege Ralph Wehnes [S]
	10:45 AM SUN	BOB MCDUFFEE Vik Bekeris Cody Ross Paul Ross Chuck Peterson	MARK FRENDEIS Charlie Powe Vik Bekeris Sandi Stewart Andrew Szekely [T]	JOHN BOEHLER Darren Walloch Don Koerner Jessica Panella	BOB MCDUFFEE Vik Bekeris Dick Gerhart Chuck Petersen Jodie Dowell
Visuals	9:00 AM		Josh Harding	Josh Harding	Josh Harding
	10:45 AM	Jack Ott	Alan Torkelson	Jack Ott	Alan Torkelson
Welcome Center	9:00 AM	Wayne & Audrey Schmidt	Chery Adams	Jan Suski Joyce Thompson	Warren & Elaine Brody
	10:45 AM	Joanne Bychowsky	Carl & Sandy Hupert	Elaine Neukirch Judy Petropolis	Marty Jacobsen Elaine Mucababich Sandy Werner
Worship Leader	SAT	Michael Waal			
	9:00 AM				
	10:45 AM	Tyler Greene			

**If you aren't currently involved in a ministry at Shepherd of the Prairie and would like to find your niche, please contact Donna Kelly through at the church office at 847/669-9448 or e-mail [Donna@sotpmail.com](mailto:Donna@sotpmail.com)**

