



*Shepherd*  
OF THE PRAIRIE  
LUTHERAN CHURCH  
*Caring For All God's Children*

## Congregational Newsletter February 2018

### Statement of Purpose

*"We care for God's children of all ages by growing disciples who make disciples."*

## SOTP BUILDING TEAM ANSWERS

### Frequently Asked Questions:

#### **Q: When will the construction on the new building be done?**

A: We expect MOST of the construction to be complete end of May, 2018.

#### **Q: How many people will the new sanctuary hold?**

A. Our New Sanctuary will hold:

- 351 seated in Pews and Super Chairs in the Nave (The front 2 rows are movable/flexible seating for concerts, weddings, confirmation, VBS, etc.)
- 40 Chairs for Choir seating on the 4 wide platform stairs in Choir area
- 20 Armchairs by the organ and piano for those with additional needs
- 126+ for overflow in the Gathering Room (Narthex)
- Total seating: 537+ in Sanctuary & Narthex

#### **Q. How many people does our current Sanctuary hold?**

Our existing Sanctuary holds 225, and can be expanded using Narthex

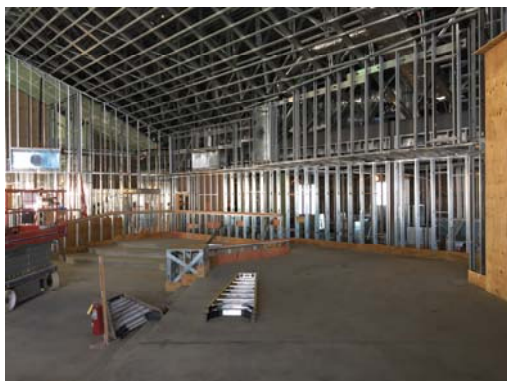
*AND THE BEST QUESTION OF ALL????*

#### **Q: When will the new sanctuary be dedicated?**

A. Save the date!!!!

**SUNDAY,  
AUGUST 5, 2018  
AT 2:00PM!!!!**

YOU'LL FIND EVEN MORE  
INFORMATION, PICTURES AND VIDEOS  
AT THE SOTP WEBSITE:  
[WWW.SHEPHERDOFTHEPRAIRIE.COM](http://WWW.SHEPHERDOFTHEPRAIRIE.COM)



## *A Note From Pastor Mark*

Brothers and Sisters in Christ,

February blessings to you and your family. This month we begin our Lenten journey once again. Kind of an unusual day to begin Lent this year. Ash Wednesday falls on Valentine's Day. I suppose, on a day when we reflect upon the sacrificial love of Christ, this day might be most appropriate as a beginning. I hope you will join us on our walk this year.

Picking up on our new beginning into the next 500 years of Reformation history we will be reflecting upon actual words Martin Luther actually preached during Lent, Holy Week and Easter. You will be giving small reflection cards each week to keep close by as a reminder of each day's message. We will also be using a theme hymn for our worship, "Jesus Keep Me Near the Cross." The words speak well to each week's message.

As we stand with Luther at the foot of the cross each week, we contemplate the ways in which we keep near the cross in the faith as followers of Christ during this holy season. The schedule follows.



### **LENTEN MIDWEEK, HOLY WEEK & RESURRECTION WEEKEND WORSHIP**

**Ash Wednesday – February 14, 12 Noon and 7:00 p.m.**  
“Near the Cross...in the Word”

**Wednesday, February 21, 6:00 p.m. Soup, 7:00 p.m. Worship**  
“Near the Cross...in Prayer”

**Wednesday, February 28, 6:00 p.m. Soup, 7:00 p.m. Worship**  
“Near the Cross...Unafraid”

**Wednesday, March 7, 6:00 p.m. Soup, 7:00 p.m. Worship**  
“Near the Cross...in Suffering”

**Wednesday, March 14, 6:00 p.m. Soup, 7:00 p.m. Worship**  
“Near the Cross...through Suffering”

**Wednesday, March 21, 6:00 p.m. Soup, 7:00 p.m. Worship**  
“Near the Cross...in Truth”

**Maundy Thursday, March 29, 7:00 p.m. Worship**  
“Living Last Supper”

**Good Friday, March 30, Children's Service, 10:00 a.m.  
7:00 p.m. Worship – “Tenebrae”**

## *A Note From Pastor Mark (continued)*

(Continued from page 2)

**Holy Saturday, March 31 – 5:00 p.m.**

**Easter Sunday, 9:00 a.m. and  
11:00 a.m. (note change 15 minutes later)**

Please join us in worship during Lent, Holy Week and Resurrection Weekend!

Peace,

*Pastor Mark*

## *Adult Education News*

Easter is early this year--April 1. Thus, Lent is also early, beginning on February 14 with Ash Wednesday. During the six weeks of Lent, we'll focus on the Passion narratives in the four Gospels. Matthew, Mark, Luke, and John all tell the story of the arrest, trial, suffering, and death of Jesus--from Palm Sunday to Easter--but all tell it differently. Each gospel writer includes his own nuances, and with good reason. We'll begin with the Old Testament foreshadowing story found in Isaiah 52 and 53, then we'll explore the four gospels, concluding with the Apostle Paul's version of the same. Come join us!



We meet on **Sunday mornings at 10:20, and on Wednesday mornings at 11:00**. In lieu of Wednesday evening classes, we'll come together for Lenten suppers and worship. See YOU there!

*Pastor Bill*

## **COFFEE HOUSE**



Join us for Coffee House

**FRIDAY, MARCH 2, 6:30 PM**

Contemporary Christian music, beverages,  
desserts & games. Fun for all ages.  
Free will offering

Contact: Tyler Green      [Tyler@sotpmail.com](mailto:Tyler@sotpmail.com)

## Ministry Musings

Recently I was reading the story of the call of Matthew in the gospel of Mark along with a commentary on it. The commentary didn't focus primarily on Mathew's call but on the events following it where Jesus and his disciples had dinner with Matthew and his friends at Matthew's house. Evidently, the "Social Media" of that day was to walk around town and check out who was eating with whom and chat about the company they kept. The buzz was that Jesus and his friends weren't very particular about their dining partners! In today's world this would be texted, tweeted, shared and posted all over the internet within minutes.



When Jesus is questioned about eating with "sinners and tax collectors" he replies that it is the sick who need physician and he came to call the sick. The commentary then went on to talk about how Jesus came to call the tax collector, the self-aware sinner, and the scribe, the self-presumed saint, and that how on any given Sunday it is difficult if not impossible to tell who is "sick" and who is "healthy". The author also wondered if we come to the table aware of our own sickness and need.

When we break bread and drink the cup, Jesus is dining at our house; and so are the "sinners and tax collectors" and the "the crowds, the disciples, the scribes and the Pharisees". Included are the leader who is certain he/she is absolutely right about continuing to do things the way it has always been done, or was done at their old church, the one who struggles to stay on their meds to quiet the voices in their head, the one who "fell off the wagon" again and fights to get back on it, the parent with the noisy little ones, the bored middle schooler who would rather be anywhere else, the older person who sees their health deteriorating and the rest of us, each with our own sicknesses, are dining with Jesus today ready to receive the healing he has to offer. The crust of bread and the drop of wine are meant for all of us. But not just for our own sakes, but for the sake of others.

Jesus is often called, "The Great Physician". While on earth he healed many people of various diseases and conditions. If Jesus is the great physician, then we are called to be "physician assistants".

*(Continued on page 5)*

## *Ministry Musings Cont.*

*(Continued from page 4)*

Wikipedia defines Physician Assistants as “a healthcare professional who practices medicine as a part of a healthcare team with collaborating physicians and other providers. PAs are concerned with preventing and treating human illness and injury by providing a plethora of health care services under a supervising physician”. To me that sounds a lot like our call from Jesus, to care for his creation!

We don't need to be a medical professional to care for others. All we need is a listening ear and heart. We may not be able to prescribe medication or run medical tests; but we can hold a hand, listen to another, serve a meal, send a card, make a quilt, sing a song, teach a child, pray with and for someone, share the gospel, play a game and unlimited other ways to show that Jesus and we care! Isn't that what being a disciple really is, following our leader and caring for his people and his world?

Come and be a physician assistant to the Great Physician, be part of his healthcare team to bring his love and healing to the world.

*Donna Kelly*

## **THE BARNABAS CAREGIVING PROGRAM**

**THE FIRST DUTY OF LOVE IS TO LISTEN - Paul Tillich**



As you may know, the ELCA's Comprehensive Ministry Review Team spent a weekend with Shepherd of the Prairie last October. One of the recommendations they had for SOTP was that we begin a Barnabas Caregiving Ministry here. We are taking the first steps to make that happen and this can be an exciting step in ministry for SOTP.

### **WHAT IS THE BARNABAS CAREGIVING PROGRAM?**

It is a simple, effective program for training volunteers to give care in most institutional and home situations. Giving care means having conversations with those who are homebound, in care facilities or

*(Continued on page 6)*

## THE BARNABAS CAREGIVING PROGRAM (CONT.)

*(Continued from page 5)*

facing some of life's most difficult seasons to provide a listening ear and encouragement to those who need to be heard and cared for.

The ministry is named after Barnabas, the apostle first mentioned in the book of Acts (4:36-37) who encouraged the twelve by selling a piece of property and laying a gift of the money at their feet. In their gratitude the renamed him "Bar- Nabas" – "Son of Encouragement". Barnabas later traveled with Paul in bringing care and continued encouragement, along with the gospel, to the gentile world.

### **WHAT IS A BARNABAS MINISTER AND WHAT DO THEY DO?**

A Barnabas Minister is a skilled listener who encourages others by that listening. They are trained in how to listen effectively, how to build relational skills, and in how to encourage others. They will also be trained to bring Communion from the Assembly to the special person they visit.

### **THERE ARE SEVERAL WAYS TO SERVE AS A BARNABAS MINISTER:**

- Caring for a loved one in your home
- Caring for a congregational member who is homebound
- Caring for a congregational member in a care facility
- Serving on a hospital visitation team
- Caring for a person dealing with a life issue

After attending the training, participants are eligible to be commissioned as Barnabas Ministers. After training, each trainee will be able to choose whether or not they wish to make a commitment to be a Barnabas Minister, and what form of service that will take. Once a minister is commissioned, they will be matched with the special person they will minister to.

**Training: Saturday, April 14th, 9am to 2pm**  
*(lunch and all materials will be provided).*

Come and see if this is where God is calling you to serve.

***To make a reservation for training or for more information***  
*contact Pastor Mark, [pastormark@sotpmail.com](mailto:pastormark@sotpmail.com) or*  
*Donna Kelly, [donna@sotpmail.com](mailto:donna@sotpmail.com) .*

## FIRST COMMUNION CLASSES

Parents of 5th graders mark your calendars for First Communion classes with Pastor Mark the Saturday mornings of:



⇒ Feb. 24, 9:30 - 11:00 am

⇒ March 10, 9:30 - 11:00 am

⇒ March 17, 9:30 - 11:00 am

The weekend of March 17 & 18 will be first communion at the service of your choice.

**Please register your child on-line at [www.goo.gl/HbcZC8](http://www.goo.gl/HbcZC8) or by calling the church office at 847/669-9448**

## NEW MEMBER GATHERING

"Come and see!" Jn 2:46b. If you have been worshipping with us for a while here at SOTP and would like to know more about us as a worshipping community, we would love to have you join us at our New Member Gathering. We will be offering the gathering on

**SUNDAY, FEBRUARY 18TH FROM 3:00-5:30 PM.** This will

be an opportunity for you to learn more about the life and ministry of SOTP and for you to consider prayerfully whether or not you want to formally become a member of the SOTP family.

We will welcome new members the following Sunday February 25th.

*To RSVP and have questions answered, please contact either Pastor Mark or Donna Kelly through the church office.*



## VISITOR'S COFFEE



If you have visited Shepherd of the Prairie and would like to have a chance to meet with Pastor Mark and Donna Kelly (and maybe ask a few questions), we are hosting a get acquainted coffee on **February 18 from 10:00 - 10:40 am**. We will be set up in the middle Sunday School room in the west wing of the building (*to the right as you exit the Worship Area*).

We invite all who would like to come to join us. This will be a chance to meet each other in a very casual "open house" kind of setting. Hope to see you there!

*Contact: Donna Kelly [Donna@sotpmail.com](mailto:Donna@sotpmail.com) 847-669- 9448*



## SAVE THE DATE! ~ UPCOMING EVENTS

SPRING BAZAAR

**March 10, 11, 17 & 18**

CREATION RESTORATION 8.0 TRIVIA NIGHT

**Sunday, April 22, 5:00pm**

BUILDING DEDICATION

FESTIVAL WORSHIP SERVICE

**Sunday, August 5, 2:00 pm**

ANNUAL PICNIC AT DEICKE PARK

**Sunday, August 19, 12:00 Noon**



## HABITAT FOR HUMANITY



We need 4-6 volunteers to help at the Habitat for Humanity Resale shop in Elgin **February 15, and March 15.** We are looking to book 3-hour shifts.

Contact Carl or Sandy Hupert: 224-569-6041 or  
[Carlhupert@gmail.com](mailto:Carlhupert@gmail.com) [Sandyhupert@gmail.com](mailto:Sandyhupert@gmail.com).

## PALM SUNDAY CONCERT NEEDS YOUR VOICES

Planning is underway for our 23rd Annual multi-congregational Palm Sunday ecumenical choral concert and prayer service on March 25. All rehearsals are held at First Congregational Church in West Dundee **UNLESS** otherwise notified.



Rehearsal dates:

- Thursdays, Feb. 8, 15 & 22: 7 - 8:30 pm
- Saturday, Feb. 17 (10-11:30 am),
- Thursdays, March 1, 8, 15, 22: 7:00 - 8:30 pm
- Saturday, March 10 (10-11:30 am)
- Saturday, March 24 final rehearsal at St. Catherine's (time to be determined)
- **Sunday, March 25 Palm Sunday Festival Concert** at St. Catherine of Siena in West Dundee, 3:00 pm

All Christian singers (members and non-members) are invited to join, we can always use more good voices! Please RSVP to Jane McMullen at [Jane@sotpmail.com](mailto:Jane@sotpmail.com) if you will be singing with us.



## NORTHERN ILLINOIS FOOD BANK

Please mark your calendars accordingly  **SATURDAY, MAY 19, 9:00 - 11:30 AM** so you can help do God's Work with Your Hands at the Northern Illinois Food Bank. The Mission Team has committed our church to provide 70 volunteers to help put together food items to feed our hungry neighbors. There are also sit-down jobs that contribute to the projects - Simply let us know. Whether you have been there or not in the past, you will discover how great it feels to assist.

**A Saturday date was chosen so that families (children minimum age 8) have a better chance of participating together.** It is a great learning experience for people of all ages. Please consider signing up. If you have any questions, or want to sign up, please call Dave or Sharon Stangle at 224-628-2107 or email [stangle.ds@gmail.com](mailto:stangle.ds@gmail.com)

Participants are invited to meet at church by 8:00 AM and carpool to 273 Dearborn Ct., Geneva, IL, or you can go directly there, arriving by 8:45 in time to confirm registration, gather together for a prayer, and begin working. We will end by 11:30.

As the Isaiah 58:10 tells us, "Feed the hungry and help those in trouble, then your light will rise and the darkness around you will be as bright as day."

### NORTHERN ILLINOIS FOOD BANK

Feeding Our Hungry Neighbors | Volunteer. Donate. Get Involved.

[WWW.SOLVEHUNGERTODAY.ORG](http://WWW.SOLVEHUNGERTODAY.ORG)

## SOTP MUSIC MINISTRY REHEARSALS

### CHILDREN'S BELLS & CHOIRS Wednesdays

- ⇒ Blessings Choir (3rd - 8th grade)  
4:30 - 5:10 pm (K-1 Room)
- ⇒ Cherub Choir (toddlers - 2nd grade)  
5:00 - 5:20 pm (Big Sunday School Rm)
- ⇒ Chimers ring & sing (kindergarten - 2nd grade) 5:30 - 5:50pm (Big Sunday School Room)
- ⇒ Jubilate Bells (3rd grade - 5th grade)  
5:15 - 5:50 (Sanctuary)



ADULT HANDBELLS Tuesdays, 7:00 - 8:30pm

ADULT CHOIR Wednesdays, 7:15 - 8:15 pm

Contact: Jane McMullen [Jane@sotpmail.com](mailto:Jane@sotpmail.com)

### What is PADS?

Public Action to Deliver Shelter (McHenry County founded 1988). This program is not government supported. Since 2009, PADS reports a 51% increase in people needing help (33% increase in homeless individuals diagnosed with mental illness 54% increase in chronically homeless and 46% increase in transitional youth).

### How does SOTP help?

We make lunches and serve dinner. Preferably five volunteers are needed. Youth volunteers are welcome (depending on maturity level and if they are able to sit still for one hour following directions without adult supervision). We meet at SOTP Sunday evenings at 5:45 p.m. to make lunches for the shelter, and then transport lunches (including donations) to Bethany. We serve dinner from 7:00 to 8:00 p.m. Jill Brown shops for supplies. This is a ministry that is allocated in our church budget.

### To help out:

Bring in items for SOTP volunteers to take to PADS. Items currently needed: individual/travel size toiletries (*especially deodorant*), paper towels, napkins, twin blade disposable razors, bleach (*any size*), \$5 fast food certificates, ear plugs, cereal, new or gently used long johns (*especially bottoms*).

### Where?

We support Bethany Lutheran Church every 4th Sunday at 76 W Crystal Lake Ave in Crystal Lake IL 60014. This is only a 15 to 20 minute commute from SOTP. Linda is our contact at Bethany--she has been in charge of that facility for over 25 years. There are 7 churches in McHenry County that provide overnight shelters (rotated Monday through Sunday) from 7:00 p.m. to 7:00 a.m. A transportation bus is used to commute the homeless between the churches.

Contact: Jill Brown [jillbrown14@yahoo.com](mailto:jillbrown14@yahoo.com)

## GEMS GIRLS' CLUB



Upcoming GEMS Girls' Club Dates:  
Wednesdays from 6:00 - 7:00 pm

**January 24**  
**February 7 & 21**  
**March 7, 14 & 21**

## LITTLE LAMBS REGISTRATION OPEN



We started accepting registration for the 2018-2019 school year on **February 1st**. Our preschool has programs for children ages 2-4 (by September 1, 2018).

**CHILDREN DO NOT NEED TO BE POTTY TRAINED.**

Our class sizes are small (not more than 10-12 per class). 1, 2, 3 or 4 day classes are available to both members and non-members. For more information please contact Jill Gillming at [LittleLambs@sotpmail.com](mailto:LittleLambs@sotpmail.com) or go to our website and look under FORMS for CLASS REGISTRATION.

## MEN'S BREAKFAST

Gentlemen, Our next breakfast will be **Feb. 7th at 9:00** at Sammy's in Huntley. Please let RSVP to John by Feb. 5th if you will be coming. Sammy's likes to know how many to set up for. Hope to see you there. John Shepard [fennvilleduo@comcast.net](mailto:fennvilleduo@comcast.net) 224-858-4615



## MEN'S COFFEE



All men are invited to join us for coffee at McDonald's By Walmart in Huntley **every Tuesday at 8:30 am**. No RSVP required, just join us!

*Contact: Pastor Bill Waxenberg  
[PastorBill@sotpmail.com](mailto:PastorBill@sotpmail.com)*

## FEMALE FRIDAYS

Join the women of SOTP for a night out! These nights are for all women of SOTP to get together for a night of dinner and fellowship.

**The next Female Friday is  
Friday, February 9th at 6:00 pm  
Jameson's Restaurant in Huntley**



**Please RSVP** to Joanne Schwartz at 847/659-1740 or [joanneschwartz@comcast.net](mailto:joanneschwartz@comcast.net) so we can have a reservation big enough to accommodate everyone. Looking forward to seeing you!

# CONGREGATIONAL RESOURCING EVENT 2017

Join Us **SATURDAY MARCH 10, 8:30 AM**  
at **Kishwaukee Community College in Malta, IL.**

The Congregational Resourcing Event (CRE) is one of this synod's finest yearly events. Everyone in the congregation can take advantage of this learning event to strengthen skills, gather resources, network with others, and discover new ways to enhance congregational and individual ministries. Come, experience and bring home new ministry tools.

The CRE offers many varied educational workshop selections for you.

**SUPERVISED CHILD CARE IN KISHWAUKEE COLLEGE'S ON-CAMPUS EARLY CHILDHOOD CENTER IS PROVIDED WITH PRE-REGISTRATION.** A free-will offering will be accepted to cover child-care costs.



## Keynote speaker:

**Rev. Nathan C.P. Frambach, Professor of Pastoral Theology  
Wartburg Theological Seminary**

Being Church, Now & Then: what the church of the future might look like...perhaps?" The presentations (and conversation) will be (hopefully) amusing, imaginative, forward-looking thought experiment about what "being church" and living God's mission might look in the future (and the future may be now). The presentations will include material from a few provocative thinkers and writers—theologian John Caputo, poet Mary Oliver, and essayist and poet Wendell Berry, to stimulate and inspire our thinking and imagination.

Several members from here at SOTP went last year and found it a valuable asset to their continued ministry. We invite members to attend again this year. We should have the formal list of workshops, costs and times shortly and I will pass that info on to all.

**IF YOU ARE INTERESTED IN BEING PART OF THIS GREAT DAY OR HAVE QUESTIONS, PLEASE CONTACT DONNA KELLY AT THE CHURCH OFFICE AT 847-669-9448 OR AT [DONNA@SOTPMAIL.COM](mailto:DONNA@SOTPMAIL.COM).**

Coffee & Donut Fellowship!



## BREAKFAST AT MORKES

All are invited to join in fellowship at Morkes in Huntley **every Friday at 6:30 am.**

Contact: Adam Adams [coffieman1@aol.com](mailto:coffieman1@aol.com)

## FEED MY STARVING CHILDREN

Feed My Starving Children

The Mission Team would love to invite you to serve along with us.



**WHEN:** **Saturday February 17th**

**TIME:** 9:00 - 11:00 am

**PLACE:** Feed My Starving Children

1072 National Parkway

Schaumburg, IL

**WHO IS INVITED:** EVERYONE!!!!!!!!!!!!

We have 38 more spots to fill and would love some help.

Come on out for a fun filled 2 hours! There are different tasks available, including sitting jobs. This is a great way to volunteer as a family, children are welcome!

Please register at [www.goo.gl/DCr3RK](http://www.goo.gl/DCr3RK)

For more information, please contact Jill Brown, 847-683-5027 or [jillbrown14@yahoo.com](mailto:jillbrown14@yahoo.com)

## HUNTLEY EXPO ~ HELP NEEDED

The 2018 Huntley Home, Biz & Wellness EXPO is on **MARCH 3**.

SOTP will have a booth space and YOU are invited to represent our Church and help Host our EXPO booth. Our booth will feature a

spinning prize wheel game, promotional giveaways and a video highlighting some of our ministries at Shepherd of the Prairie.

Help our Church family promote Shepherd of the Prairie and bring people to Christ. Thank you for your support.

**Sign up for set up, take down or a two hour time slot at**

**[www.goo.gl/wzGDSF](http://www.goo.gl/wzGDSF)**

Contact, Mike Yndestad, Outreach, 630-291-5364 for more info.



## ALTAR FLOWERS FOR 2018



The altar flowers lists are posted in the Crossroads. If you would like to donate flowers for a weekend, sign up now. To pay your \$25 for donating one bouquet of flowers for the weekend, please mark clearly on your offering envelope that \$25 is for ALTAR FLOWERS.

Please take the flowers home with you after the 10:45 am service.

## LENTEN OFFERINGS

The 2018 SOTP Lenten Offerings will be divided equally between these two charities.

- ⇒ Lutheran Social Services of Illinois LSSI is the largest statewide provider of social services to those in need in communities across the state. These include children's services, behavioral health services, family and prison ministry, senior services. Our contribution will go where it is most needed at this time.
- ⇒ ELCA Lutheran Disaster Response ELCA Lutheran Disaster Response brings God's hope, healing and renewal to people whose lives have been disrupted by disasters in the United states and around the world.



## COFFEE HOUR / COFFEE FELLOWSHIP

Coffee Hour at SOTP: What does it mean to you?

- ⇒ "The Coffee Hour to me is togetherness." ~ Mike Parmele
- ⇒ 1) A time to talk to fellow members we haven't seen in a while, & catch up with what's going on in each others lives.
- 2) A great time to introduce ourselves to members & guests that we have never met, or previously talked to. I don't have to leave the church grounds to "Enter the mission field" ~ Wayne Schmidt

Notice how neither one mentions coffee or treats (even though that is a part of it too)? Help us keep coffee

fellowship alive at SOTP. **Contact Pam Sandberg at [pammies@ymail.com](mailto:pammies@ymail.com) to see how you can help keep coffee hour what it is.....** ("What is Coffee Hour to you?" e-mail your reply to Michelle at [michelle@sotpmail.com](mailto:michelle@sotpmail.com).)



## FOOD PANTRY

**Weekend of February 3 & 4**

is Food Pantry Collection Weekend at SOTP before all services

**THIS WEEKEND PLEASE BRING  
SOUP & CEREAL**

AND AS ALWAYS,

CHECKS MADE OUT TO SOTP THAT STATE "FOOD  
PANTRY" IN THE MEMO WILL BE FORWARDED  
TO THE FOOD PANTRY.



Contact: Alice Hallett  
[agrndmom3@gmail.com](mailto:agrndmom3@gmail.com)



## GIVING STATEMENTS



2017 Giving Statements have been printed and made available for pick-up at the church in January. If you are out of the area for the winter and would like your statement e-mailed to you, please let Sue Wehnes know at: [susanwehnes@sbcglobal.net](mailto:susanwehnes@sbcglobal.net).

We encourage you to check your statement immediately for errors, omissions, questions or concerns about your statement. We would like to make any corrections as soon as possible.

## THANK YOU ~ PADS

Thanks to all of you. For all the lunches made, dinners served and clothes & toiletries. Thank you so much for your \$100.00 donation to our program. We can help our guests with medicine, winter boots and many other things.



God's Blessings to All of you, PADS at Bethany Lutheran Church

## THANK YOU ~ TURNING POINT



Shepherd of the Prairie,  
Turning Point would like to thank you for your generosity this past holiday season. Your participation in our holiday giving program brought joy & comfort to our families.

We recognize the effort it took to purchase, organize & deliver the requested items on each with list. Thank you for bringing the holiday spirit to the lives of our clients.

With Gratitude, Turning Point

## THANK YOU ~ ADELE WOGSTAD

Dear Friends from Shepherd of the Prairie,  
I would like to thank you so much for your cards, notes, thoughts and prayers during Cathi's illness and death. I don't know what I would do without my church, Pastor Mark and Pastor Bill. You are a big part of my life. Thank you all so much.

God Bless, Adele Wogstad





# Parenting Teenage Faith

Kyle was open about expressing his love for God. . . as a child. Then, according to his concerned parents, Kyle became a teenager and his devotion to the Christian faith seemed to fade. What was happening to Kyle? Children from birth to age ten have a blind faith tendency to accept without question the values and beliefs of parents. While they don't have a deep knowledge of biblical facts and theological truth, they do believe in the simple facts and truths which are taught by Mom and Dad, then reinforced at church. But it won't necessarily stay that way in adolescence. Armed with a God-given newfound ability to think, evaluate, and solve problems, teenagers oftentimes begin to question the values and beliefs they have previously accepted. They will take what you have painstakingly and faithfully handed down to them and put it to the test. This is oftentimes the case when it comes to the Christian faith.

The questioning attitude of a teenage child who has been raised and instructed in the faith can be the most challenging and disheartening aspect of parenting for Christian parents. I know several parents who have weathered this storm to watch their children grow up with a faith that has become their own. In fact, many of them have embraced the storm knowing that in the long run, their child will be better for having gone through the difficulty. When I ask them how they got through it, they consistently offer these simple and valuable suggestions to parents who are still facing this challenge:



Be diligent in teaching young children by precept and example. Talk about your faith. . . and never stop. Spend time together learning to understand God's Word. By doing so you will help your children build a strong foundation.

Don't be upset when your children start to ask questions. Rejecting the faith of your childhood is very different from asking honest questions and expressing doubt. A teen's struggle to find answers to real and serious questions is a step on the road to spiritual growth.

*(Continued on page 17)*

## YOUTH CULTURE NEWS (CONTINUED)

*(Continued from page 16)*

- Encourage your teen to be a vital part of your church. Teens benefit from interaction with older Christians who in the context of a loving relationship, freely share with vulnerability and honesty the Godly wisdom that comes with advanced years and spiritual maturity.
- Openly share your own doubts and struggles. Teenagers value authenticity and vulnerability in parents and other adults. Sharing our doubts with our children allows them to see us in our full humanity and dependence on God.
- Never, ever forget that spiritual growth is a process. If you are a Christian parent, your level of faith, spiritual maturity, and understanding is not the same as when you were a teenager. You've gone through a long process of growth that is still continuing. Since they are just like you, show them patience and grace.
- Remember that spiritual maturity is born out of struggle. God always redeems horrible situations to bring His good out of our rebellious bad. That mistake your teen just made might just be the very thing God is using to whittle them into who He wants them to become.
- Never stop praying for your kids. We can never be successful in force-feeding faith to our kids. We can only teach them and answer their questions. The rest is in God's hands.
- Don't ever believe that the story is over. God's ways are not our ways. And His script for our story and the story of our kids is not the script we would write. My wife and I are continually reminded that for all of us, the story is not yet over.

## CULVER'S FUNDRAISER

**DINE AT CULVER'S OF  
HUNTLEY ON**

**MONDAY,  
FEBRUARY 5TH  
FROM 4 - 8 PM.**

Let our youth serve you while Culver's donates a % of sales that night back to them for their mission trip.



**DONATE WHILE  
YOU DINE**

[www.greggornation.com](http://www.greggornation.com)

# From The Word

God never promises that our lives will be easy. We live in a broken

world as broken people. Hardships, distress, and troubles oftentimes come our way. When we are blessed with the gift of children, our family grows with the addition of more broken people. Therefore, the opportunities for difficulty to visit our homes increase. Realizing these things is not taking a pessimistic view of life, but rather a realistic view of life.

But we can't stop by lamenting our brokenness. A fully realistic view of life is a view that realizes the fact that we can turn to God in our times of difficulty to find hope. In Psalm 40, we read David's confession of trouble and distress. He describes himself as crying as he is stuck in troubles that he calls a "slimy pit" filled with "mud" and "mire." But this swampy ground of life's troubles are not where God allows him to remain. Rather, they are an occasion for God to answer his prayers by lifting him out of the difficulties.

Life throws all kinds of difficult situations at us. Add children to the mix and the difficulties seem to come at us faster and harder. But David reminds us that that when we trust in the Lord, we have a help and a deliverer. We are truly blessed when we make the Lord our trust (Psalm 40:4). Parents, trust in the Lord not just when life is difficult, but at all times.

---

# From The News

OPIOID CRISIS  
Unless you've been ignoring the

news, you know that our country is locked in an opioid crisis that is wreaking havoc on individuals, families, and communities. In 2014, almost 29,000 Americans died from opioid overdoses. That number rose in 2015 to 33,000 opioid deaths. In 2016, overall deaths from drug overdoses are estimated to be almost 65,000. And this year, the numbers continue to track up. Thanks to opioids, overdosing on drugs is now the most common cause of death for people under the age of fifty years old. Drug and alcohol addiction is literally touching every family in our country. Parents, we can't sit by quietly and assume that our kids and our family are somehow immune from this issue. We need to be proactive in talking to our kids about the pressures to use drugs, the dangers of using drugs, and the need to worship God with our lives by choosing to live our lives free of drug abuse. Talk to your kids today.

### Trends

#### *Transgenderism & Reversal Surgery*

Ten years ago, virtually no one in youth culture was talking openly about transgenderism. Now, transgenderism has moved into the public consciousness, with a growing number of children, young and old, claiming that their personal identity does not correspond to their birth sex. There is strong speculation that the increase in those identifying as transgender has been fueled by a kind cultural promotion and popularity facilitated by social media and widespread acceptance. In the wake of a growing number of gender reassignment surgeries, more and more people, particularly transgender woman over the age of thirty, are asking for reversal surgery. Dr. Miroslav Djordjevic says that as the number of those who regret the surgery grows, they are motivated by experiencing crippling levels of depression and in some cases have contemplated suicide. Parents, we must push on this growing confusion by telling the creation story, where God assigns gender as male and female.



### Latest Research

#### *Binge Drinking & Brain Development*

The human body is an amazing thing. It's been created by God as an integrated whole that is very complex. Science and medicine have opened

new doors of understanding as to just how intricate and interrelated the parts of the body really are. It should come as no surprise that introducing

alcohol into one's system alters both consciousness and chemistry, regardless of one's age. But what is most alarming is the fact that a growing number of kids are doing real damage to their brains as a result of the increasingly widespread practice of binge-drinking, in which they drink five or more drinks in a row.

Researchers are now drawing more and more connections between teen drinking and issues in brain development. The dangers and consequences are real. We must help our teens come to an understanding of their need to practice good stewardship of their God-given bodies.

- Older teens struggling with depression are more than twice as likely to drop out of high school as peers without that mental illness or those who recovered from a bout of depression earlier in life. (*Journal of Adolescent Health*)
- 58.7% of TV homes in the U.S. now own at least one Internet-enabled device capable of streaming to a TV set. (*Nielsen's Q2 2017 Total Audience Report*)

#### QUICK STATS

# FINANCIAL NEWS

## 2017 Year End Treasurer Report

*Daniel L. Wentzloff*  
*Church Treasurer*

Thanks to the faithful and generous support of this congregation, 2017 has been a very successful year financially for Shepherd of the Prairie. Once again, you have provided the resources needed to do "God's Work Our Hands".

### General Fund

We finished 2017 with Operating Income exceeding our budget by \$45,342. Expenses were under budget by \$15,464. This combination of increased giving and controlled expenses resulted in an operating surplus of \$60,806. Thanks to all for making the year a great success!

As of December 31, 2017, our Fund Balances are as shown in the following table.

<b>Fund Name</b>	<b>2017 Amt.</b>	<b>2016 Amt.</b>	<b>Increase</b>
General Fund	\$ 147,239	\$ 86,433	\$ 60,806
Restricted Funds	54,500	28,736	25,763
Reserves	131,206	119,353	11,853
Endowment Fund	10,922	10,872	50

### Building Fund

Thanks to the tremendous support of our three year Forward in Faith Building Campaign we were able to break ground this summer for our new worship/education/office space. For the two years of 2016 and 2017 we have received \$1,299,913 toward the building project.

In the spring of 2017 we received confirmation of a \$3,750,000 Construction Loan from the Mission Investment Fund of the ELCA. \$458,717 of this loan was used to pay off our existing mortgage with the balance being used to fund the construction of our new mission center.

Construction expenses are being paid monthly from Building Fund (Forward in Faith) Donations and from the Construction Loan. At the end of 2017 our Building Fund Balance was \$175,023 and during 2017 we borrowed \$1,209,415 from the Mission Investment Fund Construction Loan. In 2018 we will draw down our remaining Construction Loan Balance of \$2,540,585.

We are on track to complete the project on budget, however; your 2018 Building Fund (FIF) contributions continue to be important to the project's success. Congregation members are encouraged to complete their 2018 pledges as early in the year as possible to help reduce interest costs and assist us with cash flow needs.

### Operating Budget for 2018

We are presenting a Balanced Budget for 2018 based on projected revenues of \$692,287 and of like expenses. We believe that this is a supportable budget with sufficient contingencies available should giving not reach our expectations. The detailed budget is contained within this Annual Report and will be presented by our Accounting Administrator.

*faith and*  
**finances**

## FEBRUARY BIRTHDAYS

- 1.....Barbara Hoch, Oneida Wheeler
- 2.....Noel Lemke, Ivan Suski
- 3.....Steve Barnard, Jody Linton
- 4.....Emma Stegge, Ryan Gartzke, Brigitte Pelka
- 5.....Abby Gillming, Judith Petropulos
- 6.....William Trudeau, Judy Luecht, Sydney Patel
- 7.....Brian Harvat
- 8.....Eileen Gerald
- 9.....Jack Voss, Susan Blotch, Conner Gillming,  
Jordan DeBolt, Michelle Saletta,  
Elaine Gillam
- 10.....Betty Tazbier, Joshua Symbal,  
Mark Kowalski, Carol Fiandalo
- 11.....Annika McNeal, Zachery Serpe,  
Philip Forsythe
- 12.....Addison Buesing, Grace Boster
- 13.....Zoe Dowell
- 14.....Donald Kruto, Colin Glosson,  
Logan Glosson
- 15.....Marshall Kolcz, Elizabeth Raines,  
Ginny Pulver, Sandee Keane,  
Silvia Forsythe
- 16.....Alexa Piskule
- 17.....Chuck Petersen, Donna Kelly, Gail Barnard,  
Vernon Hansen, Karen Schimmel
- 18.....Karin Arndt, Kim Kowalski
- 19.....Gregory Gillming, Linda Jahr,  
Ralph Scalise, Nanette Ridgway,  
Dave Shotick, Carter Dean
- 20.....Carol Kalbas, Halie Gartzke
- 21.....Patty Driscoll-Shaw
- 22.....Heidi Dunfrund, Jerry Frank, Julia Hoving,  
Shannon Ross
- 23.....Nikki Bach
- 24.....Rebecca DiVenere, Rich Douglas
- 25.....Bernie Shafer, Raquel Lemke,  
Justin Anderson
- 26.....Don Petelle, Kaitlyn Guttenberg, Tim Papka
- 27.....Alan Busch, Charlie Powe, Nicole Flanagan
- 28.....Matt Konie, Mary Trodahl, George Bull,  
Joan Rice, Jason Bloomfield, Lois Jensen,  
Joshua Elam, Lauren Hoster, Jacob Elam

## STAFF & COUNCIL

### STAFF

#### **Pastor Mark Boster**

847-515-2713 (Home)

[pastormark@sotpmail.com](mailto:pastormark@sotpmail.com)

#### **Pastor Bill Waxenberg**

*Director of Adult Education*

[pastorbill@sotpmail.com](mailto:pastorbill@sotpmail.com)

#### **Greg Dowell**

*Youth and Family Ministries*

Coordinator [greg@sotpmail.com](mailto:greg@sotpmail.com)

#### **Jill Gillming**

*Little Lambs Preschool*

[LittleLambs@sotpmail.com](mailto:LittleLambs@sotpmail.com)

#### **Tyler Greene**

*Contemporary Worship Leader*

[Tyler@sotpmail.com](mailto:Tyler@sotpmail.com)

#### **Donna Kelly,**

*Connections Facilitator*

[donna@sotpmail.com](mailto:donna@sotpmail.com)

#### **Dennis Lilla**

*Technology Support Manager*

[dennis@sotpmail.com](mailto:dennis@sotpmail.com)

#### **Jane McMullen**

*Director of Music & Worship*

[jane@sotpmail.com](mailto:jane@sotpmail.com)

#### **Michelle Rankin**

*Office Manager*

[michelle@sotpmail.com](mailto:michelle@sotpmail.com)

#### **Dave Shotick**

*Accounting Administrator*

[dave@sotpmail.com](mailto:dave@sotpmail.com)

#### **Michael Waal**

*Organist/Piano Accompanist*

[michael@sotpmail.com](mailto:michael@sotpmail.com)

### CONGREGATION COUNCIL

**Marlene Boehler, President**

**Matt Greene, Vice President**

**Amy Brittain, Secretary**

**Dan Wentzloff, Treasurer**

**Adam Adams**

**Cliff Dungey**

**Bud Hansen**

**Sheri Ott**

**Nancy Ottinger**

## FEBRUARY SCHEDULES

		Feb 3 & 4	Feb 10 & 11	Feb 17 & 18	Feb 24 & 25
Presiding Minister		Pastor Mark Boster			
Altar Guild	5:00 SAT	Becky Tuzik, Sue Mattiucci, Tom & Darlene Polzin			
	9:00 AM	Adele Wogstad & Judie Symbal			
	10:45 AM	Sandy Hupert Merrily Burkland	Sandy Petersen Marlene Boehler	Jan & Don Koerner	Pam & Darren Walloch
Altar Flowers	Weekend				
Bulletin & Newsletter Folders	FRI	June Kobler Annette Carlson	Marian Mesenbrink Marlene Tresp	Barb Krmpotich Jill Hoffman	Alice Hallett Elaine Neukirch Donna Turner <b>HELP NEEDED</b>
Communion Bread	SUN	Brandi Lorenzo	Mary Trodahl	Jeannie Henley	Elaine Neukirch
Counters	MON	Warren Brody, Donna Turner & Cal Meyer			
Greeters  <b>HELP NEEDED</b>	5:00 SAT	Stevie Massei	Steve Murphy	Lois Kenyon	Nancy Zunker
	9:00 AM	Sue Wehnes Terry Halpin	Alice Murphy Terry Halpin	Elaine Gillam Terry Halpin	Dolly Cardascio Terry Halpin
	10:45 AM	Bob & Carolyn Malm			
Nursery  <b>HELP NEEDED</b>	9:00 AM	Jen Powe	Jen Kolcz	Judie Symbal	Jen Powe
	10:45 AM	Jen Nagel	Blue Geller	Sandy Hupert	Layne Jodway
	Clean Up	Judie Symbal	Jen Powe	Sandy Hupert	Jen Kolcz
Rejoice Worship Band	10:45 AM	VOCALS: Annette Boster Dana Turk, Jen Huston DRUMS: Brian Buesing	VOCALS: Annette Boster Jen Huston, Kim Szekeley Nicole Jachec	VOCALS: Annette Boster Dana Turk, Kim Szekeley Sheri Ott	VOCALS: Alan Torkelson Nicole Jachec, Sam Johnson, Shonna Rankin, Sophie Dowell GUITAR: Harry Choin, Trevor Dowell DRUMS: Brian Buesing KEYBOARD: Allison McCann
Sound	5:00 SAT	Dan Wills	Dan Wills	Dick Brush	Dick Brush
	9:00 AM	Jim Rice	Tom Polzin	Jim Rice	Tom Polzin
	10:45 AM	Brian Ott	Tim Torkelson	Brian Ott	Brian Ott

### WEEKEND HELP NEEDED

- **USHERS:** Andrew Szekeley      aszekely01@hotmail.com
- **NURSERY:** Jen Powe      jen330@gmail.com
- **GREETERS:** Dolly Cardascio      lendolly@aol.com



## FEBRUARY SCHEDULES (Cont.)

		Feb 3 & 4	Feb 10 & 11	Feb 17 & 18	Feb 24 & 25
Ushers  <b>HELP NEEDED</b>	5:00 SAT	Dennis & Carol Minitullo	Jim & Diana Murphy	Carol Hartman Becky Tuzik	Steve Murphy Becky Tuzik
	9:00 AM SUN	WAYNE SCHMIDT Warren Brody John Jensen Walter Lempke	JACK CONTI Merlyn Thompson Harriet Thompson Marlene Tresp	VIK BEKERIS Dan Wentzlof Dick Maiman Joanne Bychowsky [T] Chris Solem [T]	JEFF STIPES Harold Doege Joan Doege Ralph Wehnes [S]
	10:45 AM SUN	BOB MCDUFFEE Vik Bekeris Cody Ross Paul Ross Chuck Peterson	MARK FRENDEIS Charlie Powe Vik Bekeris Sandi Stewart Andrew Szekely	JOHN BOEHLER Darren Walloch Don Koerner Jessica Panella	BOB MCDUFFEE Vik Bekeris Dick Gerhart Chuck Petersen Jodie Dowell
Visuals	9:00 AM		Josh Harding	Josh Harding	Josh Harding
	10:45 AM		Alan Torkelson		
Welcome Center	9:00 AM	Linda & Cliff Dungey	Cheryl Adams	Jan Suski Joyce Thompson	Barbara Davis Alicce Miller
	10:45 AM	Marty Jacobsen	Noreta Walker	Elaine Neukirch Judy Petropolis	Joanne Bychowsky
Worship Leader	SAT	Michael Waal			
	9:00 AM				
	10:45 AM	Tyler Greene			

**If you aren't currently involved in a ministry at Shepherd of the Prairie and would like to find your niche, please contact Donna Kelly through at the church office at 847/669-9448 or e-mail [Donna@sotpmail.com](mailto:Donna@sotpmail.com)**



Shepherd of the Prairie is a congregation of the Evangelical Lutheran Church in America.

**Statement of Purpose:** “We care for God’s children of all ages by growing disciples who make disciples.”

For information, please call the church office at (847) 669-9448 or email: [pastormark@sotpmail.com](mailto:pastormark@sotpmail.com).

Our web site is [www.sotp.org](http://www.sotp.org) — Church Office: 10805 Main Street, Huntley, IL 60142

Shepherd of the Prairie  
Lutheran Church  
10805 Main Street  
Huntley, IL 60142

## **Worship Schedule**

***10805 Main Street  
Huntley, IL 60142***

### **Saturday Evening**

**5:00 p.m.**

### **Sunday Morning**

**9:00 a. m. Traditional Service**

**10:45 a. m. Contemporary**

**Service**

*Refreshments between Services*

*Nursery care provided all morning*

**Sunday School at both services  
(September through May)**

**NONPROFIT  
ORG  
U. S. POSTAGE  
PAID  
HUNTLEY, IL  
PERMIT NO. 16**